

**THE MISSISSIPPI EMERGENCY  
MANAGEMENT AGENCY'S**

# **DISASTER GUIDE**



# TABLE OF CONTENTS

---

**2** PLAN AND PREPARE

---

**8** HURRICANES

---

**14** SEVERE STORMS

---

**20** ADDITIONAL HAZARDS

---

**26** AFTER THE STORM

---

**33** CONTACTS

---



# PLAN AND PREPARE



# THE FIRST

# 72

# IS ON

# YOU

IN A DISASTER, IT MAY BE AS LONG AS 72 HOURS BEFORE FIRST RESPONDERS ARE ABLE TO ASSIST YOU. YOU SHOULD BE PREPARED TO SURVIVE FOR A MINIMUM OF 3 DAYS WITH YOUR OWN DISASTER SUPPLY KIT

## BUILD A DISASTER SUPPLY KIT



3 DAY SUPPLY OF NON-PERISHABLE FOOD



3 DAY SUPPLY OF BOTTLED WATER



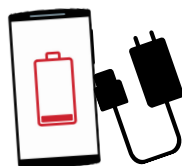
FLASHLIGHT



PORTABLE RADIO



EXTRA BATTERIES



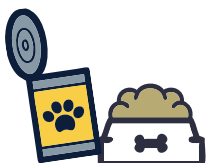
PHONE CHARGER



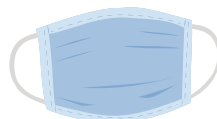
FIRST AID KIT & MEDICATION



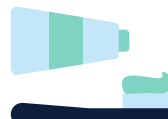
EXTRA CASH



PET FOOD & SUPPLIES



FACE MASKS



PERSONAL HYGIENE ITEMS



IMPORTANT DOCUMENTS



# BE PREPARED & PLAN AHEAD

## THINGS TO CONSIDER WHEN BUILDING YOUR DISASTER SUPPLY KIT

- ▶ EACH PERSON SHOULD HAVE ONE GALLON OF WATER PER DAY  
*A family of four should have at least 12 gallons of water on hand to last three days. If you have pets, make sure to include extra water for them.*
- ▶ PACK ENOUGH FOOD TO COVER BREAKFAST, LUNCH AND DINNER FOR EACH PERSON IN YOUR FAMILY FOR AT LEAST THREE DAYS
- ▶ IF YOU HAVE A SMALL CHILD, PETS, A SPECIAL DIET OR ANY SPECIAL MEDICAL NEEDS, TAKE THAT INTO ACCOUNT WHEN BUILDING YOUR KIT
- ▶ USE A WATERPROOF BAG TO STORE IMPORTANT DOCUMENTS
- ▶ STORE EVERYTHING IN A SINGLE BIN TO KEEP YOUR DISASTER SUPPLY KIT ITEMS TOGETHER

**SCAN THE QR CODE TO WATCH  
MEMA'S DISASTER SUPPLY KIT VIDEO**



## DEVELOP A COMMUNICATION PLAN

- 1** ESTABLISH A WAY TO GET IN TOUCH WITH LOVED ONES
- 2** DESIGNATE AN EMERGENCY MEETING PLACE IN THE EVENT YOUR FAMILY BECOMES SEPARATED
- 3** APPOINT A FRIEND OR FAMILY MEMBER WHO IS NOT AFFECTED BY THE STORM TO BE A POINT OF CONTACT
- 4** HAVE A WAY TO RECEIVE THE LATEST WEATHER UPDATES

**ARE YOU**

**READY?**

# DISASTER PLANNING FOR THOSE WITH DISABILITIES

## WHAT YOU MAY NEED:

- ▶ AT LEAST A WEEK-LONG SUPPLY OF PRESCRIPTION MEDICATION
- ▶ A COMPLETE LIST OF ALL MEDICATIONS WITH DOSAGE AND ALLERGIES
- ▶ DESCRIPTIONS OF REQUIRED ACCOMMODATIONS, MEDICAL CONDITIONS AND/OR FUNCTIONAL NEEDS
- ▶ COPIES OF MEDICAL INSURANCE AND MEDICARE CARDS
- ▶ EXTRA WHEELCHAIR BATTERIES AND/OR OXYGEN
- ▶ CONTACT INFORMATION FOR DOCTORS AND FAMILY MEMBERS WHO SHOULD BE NOTIFIED IF YOU'RE HURT
- ▶ HANDHELD ELECTRONIC DEVICES WITH HEADPHONES TO DECREASE AUDITORY DISTRACTIONS



## DISASTER PLANNING FOR PETS

INCLUDE TRASH BAGS, CLEANING PRODUCTS, A LEASH AND PET FOOD TO YOUR DISASTER KIT

HAVE YOUR PET WEAR A COLLAR WITH IDENTIFICATION & RABIES TAGS

HAVE A CRATE AVAILABLE

MAKE COPIES OF IMPORTANT DOCUMENTS FROM YOUR VETERINARIAN





# PREPARE YOUR HOME FOR A NATURAL DISASTER

## TRIM TREES



Cut back tree limbs and branches so that they don't snap off in a windstorm and land on your home or a power line

## CHECK WINDOWS AND DOORS



Ensure all windows and doors are sealed properly

## INSPECT YOUR ROOF



Check your roof for damaged areas that may need to be repaired or replaced

## CLEAN GUTTERS



Remove debris from gutters and downspouts so that rain can flow freely off of your roof

## INSURANCE

-  REVIEW YOUR INSURANCE POLICY TO MAKE SURE YOU HAVE ADEQUATE COVERAGE AND THAT YOU KNOW YOUR DEDUCTABLE
-  MAKE A *PROPERTY INVENTORY LIST* OF YOUR VALUABLES, FURNITURE, ELECTRONICS, ETC. AND TAKE PICTURES
-  HAVE COPIES OF IMPORTANT DOCUMENTS LIKE INSURANCE POLICIES, MORTGAGES AND TITLES IN YOUR DISASTER SUPPLY KIT
-  **A STANDARD HOMEOWNERS INSURANCE POLICY DOES NOT COVER FLOOD DAMAGE!**

*We encourage homeowners to purchase flood insurance separately*



VISIT [FLOODSMART.GOV](https://www.floodsmart.gov) FOR MORE INFORMATION



# PREPARE FOR PROLONGED POWER OUTAGES

## TIPS BEFORE THE STORM



### TAKE TIME TO FULLY CHARGE YOUR CELL PHONE

*A portable phone charger is a great resource to have when the power goes out. If you have one, make sure it is fully charged as well.*

### HAVE BATTERIES AND FLASHLIGHTS ON HAND

*Provide a flashlight to every member of your household*



### HAVE A PLAN FOR HOW YOU WILL USE MEDICAL DEVICES POWERED BY ELECTRICITY

### DETERMINE AN ALTERNATE WAY TO KEEP REFRIGERATED MEDICATIONS COLD



### STOCK UP ON NON-PERISHABLE FOOD AND WATER

### MAKE SURE YOU HAVE CASH ON HAND



## TIPS AFTER THE STORM

### ⚡ KEEP FREEZERS AND REFRIGERATORS CLOSED

*A refrigerator can keep food cold for about 4 hours and a full freezer will keep the temperature for about 48 hours. Use coolers with ice if necessary.*

### ⚡ ONLY USE GENERATORS OUTDOORS

### ⚡ DO NOT USE A GAS STOVE TO HEAT YOUR HOME

### ⚡ DISCONNECT ELECTRONICS TO PROTECT FROM SURGES

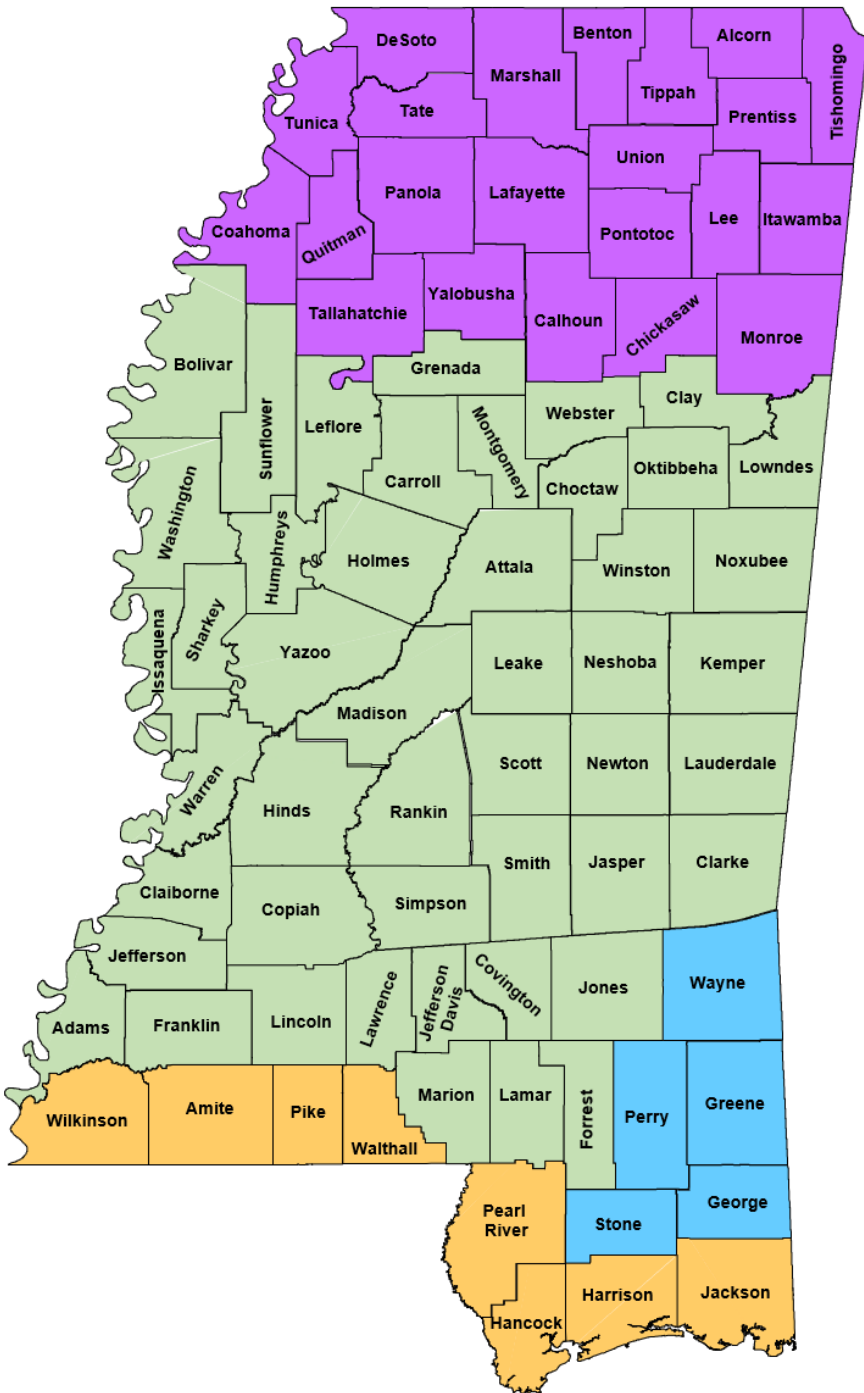
### ⚡ STAY AWAY FROM FALLEN POWER LINES





# NATIONAL WEATHER SERVICE OFFICES ACROSS MISSISSIPPI

## WHICH OFFICE COVERS YOUR COUNTY?



### NWS MEMPHIS



@NWSMemphis



[www.weather.gov/meg](http://www.weather.gov/meg)



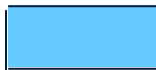
### NWS JACKSON



@NWSJacksonMS



[www.weather.gov/jan](http://www.weather.gov/jan)



### NWS MOBILE



@NWSMobile



[www.weather.gov/mob](http://www.weather.gov/mob)



### NWS NEW ORLEANS



@NWSNewOrleans



[www.weather.gov/lix](http://www.weather.gov/lix)

**HAVE MULTIPLE WAYS TO RECEIVE WEATHER ALERTS!**

# HURRICANES



# 5 HURRICANE HAZARDS



**WINDS** from hurricanes can exceed 150 mph depending on the strength of the storm and can cause major damage to buildings and uproot trees.

**STORM SURGE** is water pushed ashore by the winds of a tropical cyclone. During Hurricane Katrina, the recorded storm surge in Mississippi was over 27 feet.



**INLAND FLOODING** is a result of heavy, persistent rain from a hurricane. It can occur far from the coast and long after landfall.

**TORNADOES** are commonly spawned by landfalling hurricanes. These tornadoes develop very quickly and can result in damage far away from the center.



**RIP CURRENTS** are strong channels of water flowing away from the shore and can develop even when a tropical system is hundreds of miles offshore.

# SAFFIR-SIMPSON SCALE

## BREAKDOWN



**STORM  
STRENGTH**



**WIND SPEED**



**POWER  
OUTAGES**

**CATEGORY**

**1**

**74-95 MPH**

Outages could last several days

**CATEGORY**

**2**

**96-110 MPH**

Outages could last several days to weeks

**CATEGORY**

**3**

**111-129 MPH**

Outages could last several days to weeks

**CATEGORY**

**4**

**130-156 MPH**

Outages could last weeks to months

**CATEGORY**

**5**

**157+ MPH**

Outages could last weeks to months

# WATCHES & WARNINGS FOR TROPICAL SYSTEMS



ISSUED **48**  
HOURS AHEAD  
OF ANTICIPATED  
ONSET

ISSUED **36**  
HOURS AHEAD  
OF PREDICTED  
ONSET

## WATCH

## WARNING

### STORM SURGE:

Life threatening inundation from rising water moving on shore

### STORM SURGE WATCH

*POSSIBILITY* OF LIFE-THREATENING STORM SURGE

### STORM SURGE WARNING

LIFE-THREATENING STORM SURGE IS EXPECTED

### TROPICAL STORM:

A tropical cyclone with sustained winds ranging from 39-73 mph

### TROPICAL STORM WATCH

TROPICAL STORM CONDITIONS ARE POSSIBLE

### TROPICAL STORM WARNING

TROPICAL STORM CONDITIONS ARE EXPECTED

### HURRICANE:

A tropical cyclone with sustained winds greater than 74 mph

### HURRICANE WATCH

HURRICANE CONDITIONS ARE POSSIBLE

### HURRICANE WARNING

HURRICANE CONDITIONS ARE EXPECTED

**FOLLOW INSTRUCTIONS FROM LOCAL OFFICIALS!**

### ACTIONS:

- Prepare your home
- Review your evacuation plan
- Organize your disaster preparedness kit
- Stay up to date with the weather forecast

### ACTIONS:

- Finish storm preparations
- Evacuate if directed by local officials
- Make sure your disaster preparedness kit is ready to go

# EVACUATION TIPS

## BEFORE

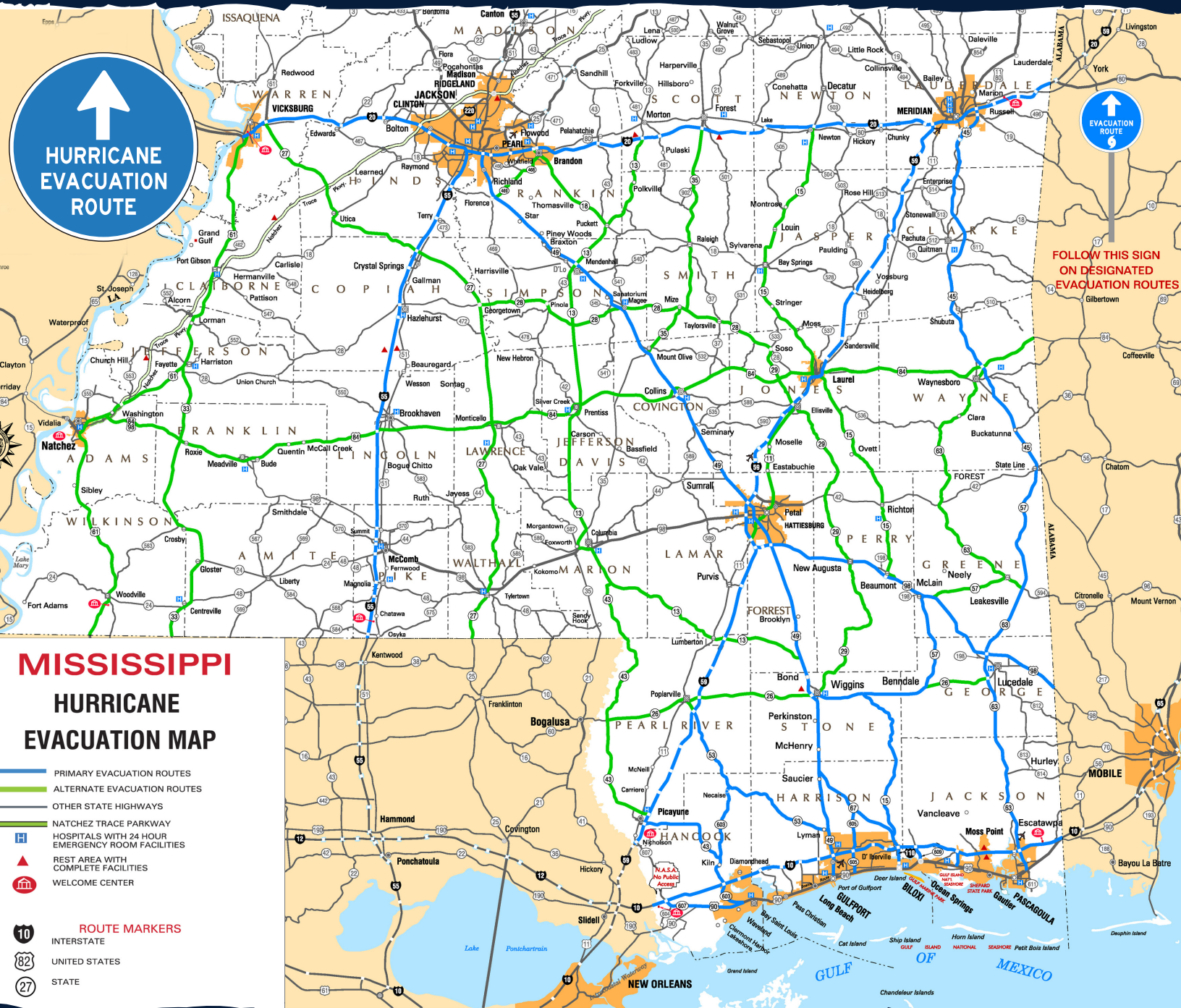
- KNOW WHERE YOU WILL GO WHETHER IT IS A FAMILY MEMBER'S HOUSE, A SHELTER OR A HOTEL
- REVIEW YOUR PRIMARY EVACUATION ROUTE AND HAVE A SECONDARY ROUTE PLANNED JUST IN CASE (*an evacuation map can be found on page 36*)
- MAKE ARRANGEMENTS FOR YOUR PETS  
*\*Pets are NOT allowed in most shelters*
- SEEK INFORMATION FROM LOCAL OFFICIALS REGARDING ROAD CLOSURES AND ADDITIONAL EMERGENCY INFORMATION
- FILL UP YOUR GAS TANK AND HAVE CASH ON HAND



## ON THE ROAD

- STAY ON OFFICIAL EVACUATION ROUTES  
*A GPS may misdirect you to roads that are closed*
- TUNE TO LOCAL RADIO STATIONS FOR EMERGENCY INFORMATION UPDATES  
*FM Radio Stations:*
  - Biloxi - 90.3
  - Bude - 88.9
  - Meridian - 88.1
  - Jackson - 91.3
  - Greenwood - 90.9
- TAKE YOUR TIME AND BE PATIENT!

# MISSISSIPPI'S HURRICANE EVACUATION MAP



**DOWNLOAD the FREE MDOT Traffic Mobile App from the App Store or Google Play**

# SEVERE STORMS





# 5 SEVERE STORM HAZARDS



A **TORNADO** is a violent rotating column of air that can have wind speeds over 200 mph. Tornadoes can destroy buildings, flip cars, and create deadly flying debris.

**LIGHTNING** is a giant spark of electricity that occurs in all thunderstorms. On average, the United States experiences about 25 million lightning strikes a year.



**HAIL** is a type of precipitation consisting of solid ice that forms inside severe thunderstorms. Hailstones can be as small as a pea or as large as a grapefruit.

**FLASH FLOODING** is caused by heavy or excessive rainfall in a short period of time. Six inches of fast-moving water can knock a person off his or her feet.



**DAMAGING WINDS** that are not associated with rotation are called 'straight-line' winds and can exceed 100 mph. Straight-line winds can be just as destructive as tornadoes.

# FLOOD SAFETY TIPS

## PREPARING BEFORE

- ▶ **KNOW YOUR AREA'S FLOOD RISK**  
*Determine your flood risk by visiting [www.msc.fema.gov](http://www.msc.fema.gov) or scan the QR code*



- ▶ **IF YOU LIVE IN A FLOOD-PRONE AREA, PURCHASE FLOOD INSURANCE**  
*Flood insurance is NOT included in your homeowner's policy*
- ▶ **TAKE PHOTOS OF IMPORTANT POSSESSIONS**
- ▶ **CLEAN YOUR DRAINS & GUTTERS REGULARLY**
- ▶ **TURN ON YOUR CELL PHONE'S WIRELESS EMERGENCY ALERT NOTIFICATIONS**



## STAYING SAFE DURING

- ✓ **HEED EVACUATION ORDERS FROM LOCAL OFFICIALS**
- ✓ **STAY UP TO DATE WITH THE LATEST WEATHER FORECAST**
- ✗ **DON'T TOUCH ELECTRICAL EQUIPMENT IF IT IS WET**
- ✗ **NEVER DRIVE THROUGH FLOODED WATERS AND AROUND BARRICADES!**



# SEVERE THUNDERSTORM — RISK CATEGORIES —

## STAYING AHEAD OF THE STORMS

SEVERE RISK CATEGORIES	DEFINITION OF RISK	POSSIBLE HAZARDS
<b>LEVEL 1 'MARGINAL' RISK</b>	<u>ISOLATED</u> SEVERE THUNDERSTORMS ARE POSSIBLE	<ul style="list-style-type: none"> <li>• Winds 40-60 mph</li> <li>• Hail up to 1"</li> <li>• Low tornado risk</li> </ul> <i>Limited in duration</i>
<b>LEVEL 2 'SLIGHT' RISK</b>	<u>SCATTERED</u> SEVERE THUNDERSTORMS ARE POSSIBLE	<ul style="list-style-type: none"> <li>• One or two tornadoes</li> <li>• Reports of strong winds</li> <li>• Hail ~ 1", isolated 2"</li> </ul> <i>Short-lived storms</i>
<b>LEVEL 3 'ENHANCED' RISK</b>	<u>NUMEROUS</u> SEVERE THUNDERSTORMS ARE POSSIBLE	<ul style="list-style-type: none"> <li>• A few tornadoes</li> <li>• Several reports of wind damage</li> <li>• Damaging hail 1-2"</li> </ul>
<b>LEVEL 4 'MODERATE' RISK</b>	<u>WIDESPREAD</u> SEVERE THUNDERSTORMS ARE LIKELY	<ul style="list-style-type: none"> <li>• Strong tornadoes</li> <li>• Widespread wind damage</li> <li>• Destructive hail 2"+</li> </ul>
<b>LEVEL 5 'HIGH' RISK</b>	<u>WIDESPREAD</u> SEVERE THUNDERSTORMS ARE EXPECTED	<ul style="list-style-type: none"> <li>• Tornado outbreak</li> <li>• Extreme wind damage</li> <li>• Destructive hail 2"+</li> </ul> <i>Long-lived &amp; very intense</i>

Days ahead of a severe weather event, meteorologists will share convective outlook graphics. This graphic displays up to five different colors representing risk levels of an upcoming severe weather event.

# WATCHES & WARNINGS FOR SEVERE WEATHER



ISSUED **HOURS**  
AHEAD OF  
POSSIBLE  
STORMS

ISSUED **MINUTES**  
AHEAD OF  
IMMINENT  
STORMS

## WATCH

## WARNING

### SEVERE THUNDERSTORM:

Capable of producing winds of at least 58 mph, 1 inch hail or greater and a tornado

### SEVERE THUNDERSTORM WATCH

CONDITIONS ARE FAVORABLE FOR SEVERE STORMS TO DEVELOP

### SEVERE THUNDERSTORM WARNING

A SEVERE STORM HAS FORMED AND IS IMMINENT

### TORNADO:

A violent, rotating column of air with winds ranging from 65 to over 200 mph

### TORNADO WATCH

CONDITIONS ARE FAVORABLE FOR TORNADOES TO DEVELOP

### TORNADO WARNING

A TORNADO HAS FORMED AND IS IMMINENT

### FLASH FLOOD:

Caused by heavy or excessive rainfall in a short period of time

### FLASH FLOOD WATCH

CONDITIONS ARE FAVORABLE FOR FLASH FLOODING TO OCCUR

### FLASH FLOOD WARNING

DANGEROUS FLASH FLOODING IS OCCURRING

**HAVE MULTIPLE WAYS TO RECEIVE WARNINGS!**

### ACTIONS:

- Remain alert
- Review your severe weather plan
- Monitor weather conditions

### ACTIONS:

- Take action immediately!
- Seek shelter in an interior room of a sturdy structure away from windows

# HAVE MULTIPLE WAYS TO RECEIVE WARNINGS



NOAA WEATHER RADIO



LOCAL TV & RADIO



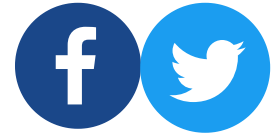
OUTDOOR SIRENS



WIRELESS EMERGENCY ALERTS



WEATHER APPS



SOCIAL MEDIA

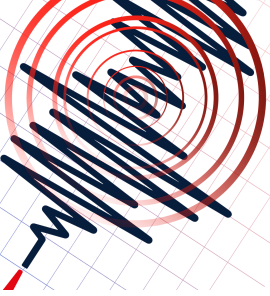
## WHERE TO GO DURING A TORNADO WARNING

- ✓ SEEK SHELTER INSIDE IMMEDIATELY IN A BASEMENT OR STORM SHELTER
- ✓ IF YOU DON'T HAVE A BASEMENT OR STORM SHELTER, MOVE TO AN INTERIOR ROOM OF A STURDY STRUCTURE ON THE LOWEST LEVEL WITH NO WINDOWS TO THE OUTSIDE
- ✗ EXTERIOR ROOMS WITH WINDOWS OR DOORS TO THE OUTSIDE ARE NOT SAFE
- ✗ ROOMS ON THE TOP OR SECOND FLOOR ARE NOT SAFE

DO NOT LEAVE YOUR SAFE PLACE UNTIL THE TORNADO WARNING HAS EXPIRED FOR YOUR AREA!

# **ADDITIONAL HAZARDS**



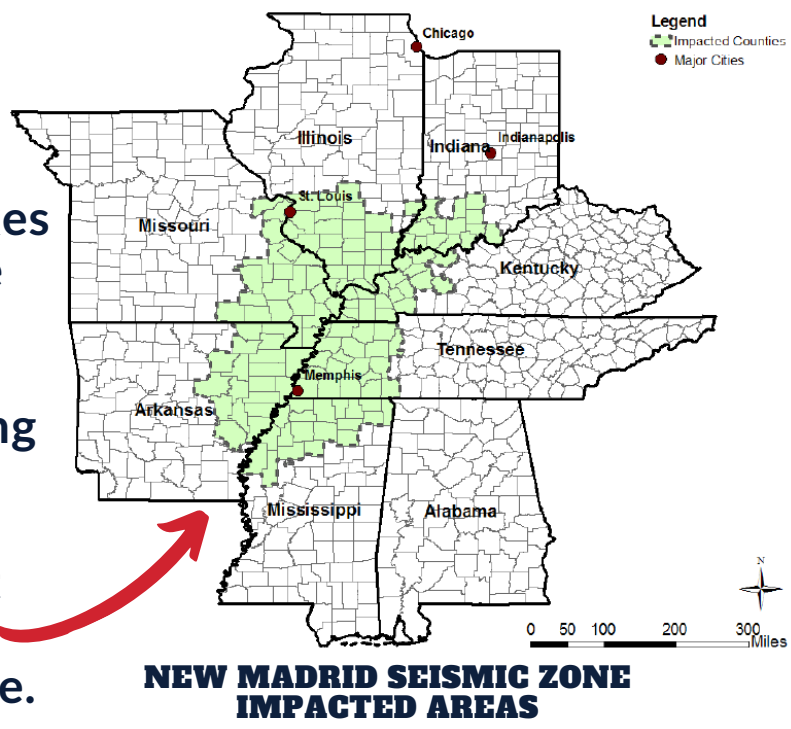


# EARTHQUAKES

## EARTHQUAKES IN MISSISSIPPI

Although the number of earthquakes known to have occurred within the state are small, we have been affected by numerous shocks in neighboring states specifically along the New Madrid Seismic Zone.

Northwest Mississippi is at highest risk for impacts from earthquakes along the New Madrid Seismic Zone.



## WHAT TO DO DURING AN EARTHQUAKE

### INSIDE:

- 1** DROP TO THE GROUND
- 2** COVER UNDER A TABLE
- 3** HOLD ON UNTIL SHAKING STOPS

*Stay away from glass, windows and anything that could fall.*

### OUTSIDE:

- ✓ STAY OUTDOORS
- ✓ MOVE AWAY FROM BUILDINGS, STREET LIGHTS, POWER LINES AND BRIDGES

### IN A VEHICLE:

- ✓ STOP AS QUICKLY AS POSSIBLE AND REMAIN INSIDE YOUR VEHICLE
- ✓ AVOID STOPPING NEAR BUILDINGS, POWER LINES, TREES OR OVERPASSES



**DROP!**

**COVER!**

**HOLD ON!**

# 3 WINTER WEATHER HAZARDS



**EXTREME COLD** paired with brisk winds can result in dangerously cold wind chill values and ultimately lead to frostbite and hypothermia.

**SNOW** is frozen precipitation in the form of ice crystals. The weight of snow can cause roofs to collapse and result in power outages and dangerous roads.



**ICE** can accumulate when there is freezing rain, which occurs when raindrops freeze on contact with the surface.

## PREPARING FOR WINTER STORMS

### ▶ STOCK UP ON NON-PERISHABLE FOOD

*Keep a supply of bottled water available also*

### ▶ MAKE PLANS TO STAY OFF THE ROADS

*If you must drive, make sure you have an emergency supply kit in your car*




### ▶ PREPARE FOR POWER OUTAGES

*Have flashlights with extra batteries on hand, keep your cell phone charged and have blankets to help you stay warm*

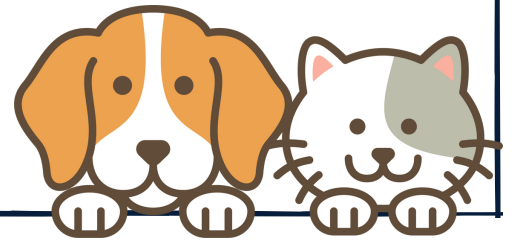




# COLD WEATHER TIPS FOR YOUR PETS

-  DURING DANGEROUS COLD, BRING PETS INSIDE!
-  IF YOU CAN'T BRING YOUR PETS INSIDE, PROVIDE THEM WITH A WARM SHELTER THAT HAS A SOLID FLOOR, THREE SIDES AND A FLAP DOOR COVERING
-  GIVE YOUR PET EXTRA FOOD AND FRESH WATER THAT ISN'T FROZEN

If your pet is whining, shivering or stops moving, bring him/her inside immediately! These are signs of hypothermia.



## WINTERIZE YOUR HOME



- ✓ **SEAL WINDOWS & DOORS**  
*Use caulking to seal windows and weather stripping for doors.*
- ✓ **INSULATE PIPES**  
*Insulate all pipes in laundry room, bathroom and kitchen.*
- ✓ **TEST SMOKE ALARMS**  
*House fires pose a risk when alternate heating sources are used.*
- ✓ **INSPECT ATTIC INSULATION**  
*If your attic and crawlspaces aren't already insulated, consider installing it.*

# EXTREME HEAT

A HEAT WAVE IS A PERIOD OF ABNORMALLY HOT AND HUMID WEATHER GENERALLY LASTING MORE THAN TWO DAYS. EXTREME HEAT IS RESPONSIBLE FOR THE HIGHEST NUMBER OF ANNUAL DEATHS AMONG ALL WEATHER-RELATED HAZARDS!

## HEAT SAFETY TIPS



**LIMIT YOUR TIME OUTSIDE IF POSSIBLE**

*If you have to be outside for an extended period of time, take frequent breaks in the shade & wear loose clothing*



**DRINK LOTS OF WATER TO STAY HYDRATED**



**NEVER LEAVE PEOPLE OR PETS IN A HOT CAR**



**CHECK-IN ON ELDERLY & DISABLED INDIVIDUALS**



**REVIEW SIGNS OF HEAT-RELATED ILLNESS**

*Scan the QR code to learn more about the symptoms and how to treat heat exhaustion and heat stroke*



NWS Heat Index

Temperature (°F)

Relative Humidity (%)	80	82	84	86	88	90	92	94	96	98	100	102	104	106	108	110
40	80	81	83	85	88	91	94	97	101	105	109	114	119	124	130	136
45	80	82	84	87	89	93	96	100	104	109	114	119	124	130	137	
50	81	83	85	88	91	95	99	103	108	113	118	124	131	137		
55	81	84	86	89	93	97	101	106	112	117	124	130	137			
60	82	84	88	91	95	100	105	110	116	123	129	137				
65	82	85	89	93	98	103	108	114	121	128	136					
70	83	86	90	95	100	105	112	119	126	134						
75	84	88	92	97	103	109	116	124	132							
80	84	89	94	100	106	113	121	129								
85	85	90	96	102	110	117	126	135								
90	86	91	98	105	113	122	131									
95	86	93	100	108	117	127										
100	87	95	103	112	121	132										



Likelihood of Heat Disorders with Prolonged Exposure or Strenuous Activity

Caution
  Extreme Caution
  Danger
  Extreme Danger

# HEAT INDEX

THE HEAT INDEX IS WHAT THE TEMPERATURE FEELS LIKE TO THE HUMAN BODY WHEN RELATIVE HUMIDITY IS COMBINED WITH THE AIR TEMPERATURE.



# RADIOLOGICAL PREPAREDNESS



## DID YOU KNOW?

GRAND GULF NUCLEAR STATION IN CLAIBORNE COUNTY IS THE LARGEST SINGLE-UNIT NUCLEAR POWER PLANT IN THE COUNTRY

NEARLY 20% OF MISSISSIPPI'S ELECTRICITY IS GENERATED BY THE GRAND GULF NUCLEAR STATION

*The plant operates emission-free and prevents about 7 million metric tons of carbon dioxide from being emitted into the atmosphere annually.*

## WHAT TO DO IN THE CASE OF A NUCLEAR EMERGENCY

- ▶ PEOPLE WITHIN THE 10 MILE EMERGENCY PLANNING ZONE NEAR THE GRAND GULF NUCLEAR STATION WILL BE NOTIFIED BY SIRENS, TONE-ALERT RECEIVERS AND/OR BROADCASTS ON RADIO OR TV

*If you hear a siren, that does NOT necessarily mean that you should evacuate!*



**FOR EVACUATION ZONE ROUTES & INFO SCAN THE QR CODE**

- ▶ TURN ON THE RADIO TO ONE OF THE STATIONS BELOW AND LISTEN FOR EVACUATION OR SHELTER IN PLACE INSTRUCTIONS

Jackson/Vicksburg.....FM 102.9	Natchez.....FM 95.1
Jackson.....FM 99.7	McComb.....FM 105.7
Jackson.....AM 620	Port Gibson.....FM 89.3
Jackson.....FM 91.3	Vicksburg.....FM 100.5 & AM 1490

# AFTER THE STORM



# WHAT TO DO AFTER THE STORM

## KEY SAFETY TIPS AFTER THE STORM

- ▶ STAY OFF THE ROADS UNLESS TRAVEL IS ABSOLUTELY NECESSARY
- ▶ IF YOU COME ACROSS FALLEN POWER LINES, STAY BACK AT LEAST 500 FEET AND DO NOT TOUCH THE LINES
- ▶ WHEN USING A GENERATOR, KEEP IT OUTSIDE. NEVER RUN A GENERATOR IN THE HOUSE OR GARAGE
- ▶ STAY OUT OF DAMAGED BUILDINGS AND WAIT TO RE-ENTER UNTIL IT'S DEEMED SAFE



## WHO TO CALL:

- FOR LIFE-THREATENING SITUATIONS, CALL 911
- CALL YOUR LOCAL EMERGENCY MANAGEMENT AGENCY FOR RESOURCES OR HELP WITH SHELTER NEEDS

*Phone numbers can be found here: [www.msema.org/county-ema/](http://www.msema.org/county-ema/)*

- THOSE WITH DISABILITIES CAN CALL 'LIFE OF MS' AT 601-969-4009 OR 1-800-748-9398 (V/TDD) FOR HELP



# WHAT TO DO IF YOUR HOME IS DAMAGED

- ✓ TAKE PICTURES OF THE DAMAGE TO YOUR HOUSE AND ITS CONTENTS FOR INSURANCE PURPOSES
- ✓ CALL YOUR INSURANCE AGENT TO BEGIN THE PROCESS OF FILING A CLAIM
- ✓ REPORT THE DAMAGE TO LOCAL OFFICIALS:
  - 1 BY PHONE - Call your County Emergency Management Agency  
*Phone numbers can be found here: [www.msema.org/county-ema/](http://www.msema.org/county-ema/)*
  - OR
  - 2 ONLINE - Use MEMA's 'Self Report' tool  
*Find more details about how to self report on the next page*

## Debris Removal Guidelines

In efforts to expedite the debris removal process, please follow these rules.

### Debris Separation

Please separate debris into the categories shown below.

Check with your local Office of Emergency Management for more information on debris removal.



Placing debris near utility boxes or on lines can cause injury or damage.

Never touch, cut, remove or place debris on downed lines.  
• Can result in injury or death

Placing debris near or on trees, poles or other structures makes removal difficult. This includes fire hydrants and meters.

## NO PICKUP

## NO PICKUP

**Vegetative Debris**  
Tree branches, leaves, logs, plants.



**Hazardous Waste**  
Oil, battery, pesticide, paint, cleaning supplies, compressed gas.



**Electronics**  
Television, computer, stereo, phone, DVD player.



**Construction Debris**  
Building materials, drywall, lumber, carpet, furniture, plumbing.



**Large Appliances**  
Refrigerator, washer/dryer, air conditioner, stove, water heater, dishwasher. Do not leave doors unsealed or unsecured.



Debris should be placed curbside

Debris should not block roadway



# HOW TO SELF-REPORT STORM DAMAGE USING CRISIS TRACK

## STEP 1

..... Go to: [msema.org/contact/crisistrack/](https://msema.org/contact/crisistrack/)



## STEP 2

..... Click on the self-reporting link for the county where the damage occurred

## STEP 3

..... Select the emergency event that caused the damage from the drop-down menu

## STEP 4

..... HOMEOWNERS: Select 'Residential Damage' as the type of damage

BUSINESS OWNERS: Select 'Commercial/Industrial Damage' as the type of damage

## STEP 5

..... Follow instructions and proceed to complete the remainder of the form

## STEP 6

..... When complete, click the 'Submit' button

MEMA'S SELF-REPORT TOOL SHOULD ONLY BE USED TO REPORT STRUCTURAL DAMAGE TO HOMES AND/OR BUSINESSES

## TIPS FOR SUBMITTING DAMAGE PHOTOS

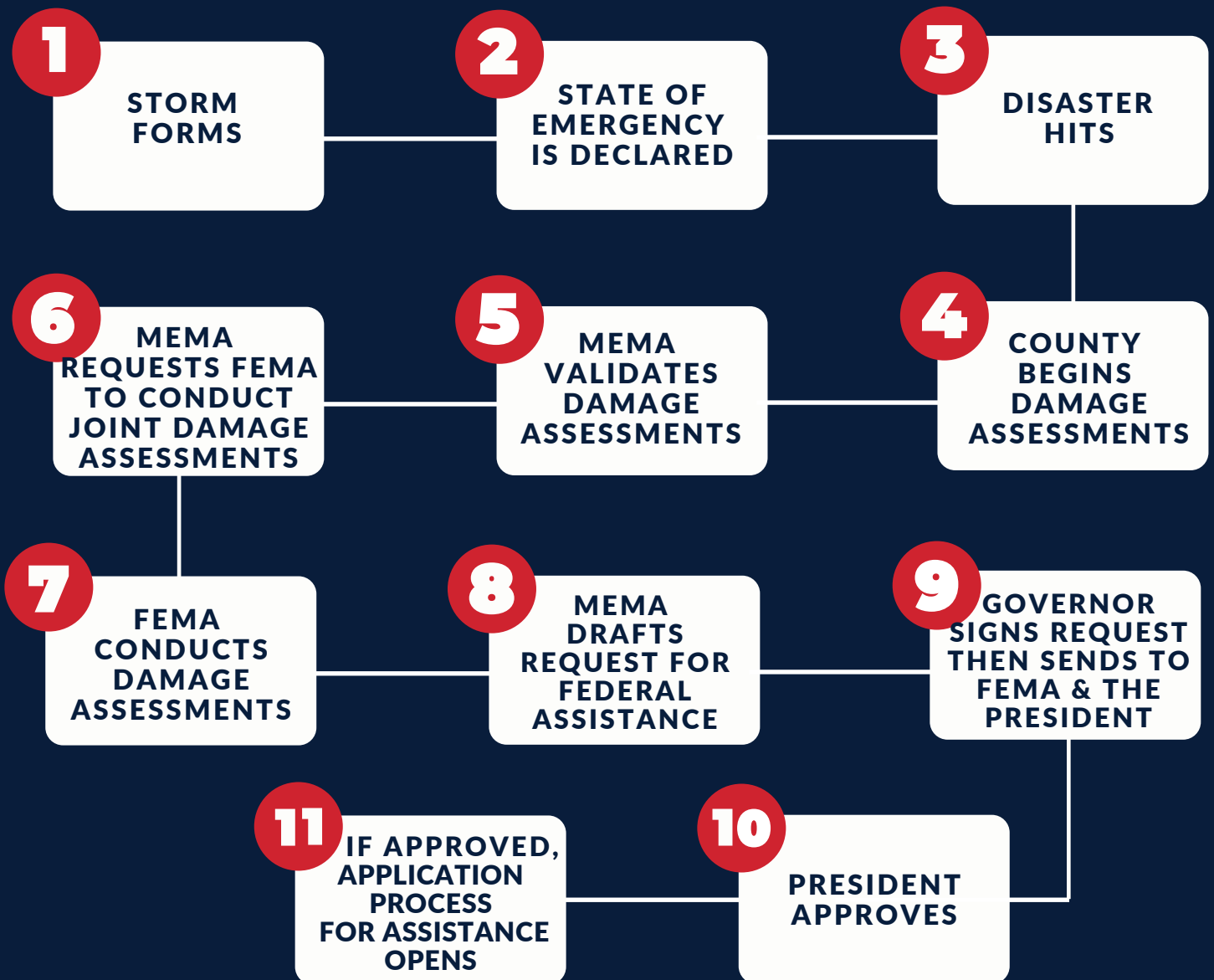
- ✓ TAKE PHOTOS FROM EVERY SIDE/ANGLE OF THE STRUCTURE
- ✓ MAKE SURE PHOTOS ARE CLEAR AND SHOW STRUCTURAL DAMAGE
- ✓ FOR A FLOOD, SUBMIT PHOTOS OF THE WATER MARK ON THE WALL
- ✗ DO NOT SUBMIT PHOTOS OF DAMAGE TO FENCES, CARPORTS ETC.

***THIS IS NOT AN APPLICATION FOR ASSISTANCE!***

# RECOVERY FOLLOWING A DISASTER

Depending on the severity of a disaster and the extent of the damage, federal assistance could become available to homeowners, renters, business owners, local governments and/or certain private nonprofits. However, federal assistance is not guaranteed!

## A STEP BY STEP EXPLANATION OF HOW THE STATE REQUESTS FEDERAL INDIVIDUAL ASSISTANCE FOLLOWING A DISASTER





# TYPES OF POSSIBLE FEDERAL ASSISTANCE FOLLOWING A DISASTER

## 1 FEMA INDIVIDUAL ASSISTANCE

### WHO'S ELIGIBLE:

Individuals and families who sustained loss after a disaster for declared counties

### HOW TO BECOME ELIGIBLE:

A Major Disaster Declaration for Individual Assistance must be declared by the President for your county following the disaster.

### ASSISTANCE MAY INCLUDE:

- Grants to help pay for temporary housing
- Emergency home repairs
- Uninsured or underinsured personal property losses
- Medical expenses caused by the disaster
- Other serious disaster-related expenses

## 2 FEMA PUBLIC ASSISTANCE

### WHO'S ELIGIBLE:

Local and state governments as well as certain nonprofits for declared counties

- FEMA can provide up to 75% reimbursement for eligible costs

### HOW TO BECOME ELIGIBLE:

A Major Disaster Declaration for Public Assistance must be declared by the President for your county following the disaster.

### ASSISTANCE MAY INCLUDE:

- Emergency protective measures
- Debris removal
- Infrastructure repairs or replacement needed due to disaster-related damage

# TYPES OF POSSIBLE FEDERAL ASSISTANCE FOLLOWING A DISASTER

## 3

### SBA HOME DISASTER LOANS

#### WHO'S ELIGIBLE:

Homeowners/renters who sustained damage & live in an SBA disaster-declared county.

#### HOW TO BECOME ELIGIBLE:

The Small Business Administration must approve a disaster declaration for your county following the disaster.

#### HOW CAN THE LOAN BE USED?

Can be used to repair or replace disaster-damaged real estate and/or personal property

#### LOAN AMOUNT LIMITS:

Up to \$200,000 for repair/replacement of real estate and up to \$40,000 for personal property

## 4

### SBA PHYSICAL DISASTER LOANS

#### WHO'S ELIGIBLE:

Businesses and private nonprofits that sustained damage in an SBA disaster declared county.

#### HOW TO BECOME ELIGIBLE:

The Small Business Administration must approve a disaster declaration for your county following the disaster.

#### HOW CAN THE LOAN BE USED?

Can be used to repair or replace disaster-damaged property owned by the business including real estate and inventories

#### LOAN AMOUNT LIMITS:

Up to \$2 million for businesses and private nonprofits

# CONTACTS



# IMPORTANT CONTACT INFORMATION



**MEMA**

☎ 1-866-920-MEMA (6362)

🌐 MSEMA.ORG



**FEMA**

☎ 800-621-3362

🌐 FEMA.GOV



**SMALL BUSINESS ADMIN.**

☎ 800-827-5722

🌐 SBA.GOV



**RED CROSS**

☎ 1-800-733-2767

🌐 REDCROSS.ORG



**SALVATION ARMY**

☎ 601-969-7560

🌐 SALVATIONARMYUSA.ORG



**MDOT**

☎ 1-866-521-6368

🌐 MDOTTRAFFIC.COM



# COUNTY EMERGENCY MANAGEMENT AGENCY CONTACT LIST

COUNTY	PHONE NUMBER	COUNTY	PHONE NUMBER
ADAMS	601-442-7021	CLAY	662-494-2088
ALCORN	662-286-7737	COAHOMA	662-624-3041
AMITE	601-657-1011	COPIAH	601-894-1658
ATTALA	662-289-5322	COVINGTON	601-765-6687
BENTON	662-224-6338	DESOTO	662-469-8017
BOLIVAR	662-843-2300	FORREST	601-544-5911
CALHOUN	662-983-0257	FRANKLIN	601-384-1720
CARROLL	662-237-9268	GEORGE	601-947-7557
CHICKASAW	662-448-1012	GREENE	601-394-5627
CHOCTAW	662-285-9705	GRENADA	662-226-1076
CLAIBORNE	601-437-4684	HANCOCK	228-255-0942
CLARKE	601-776-2256	HARRISON	228-865-4002



# COUNTY EMERGENCY MANAGEMENT AGENCY CONTACT LIST

COUNTY	PHONE NUMBER	COUNTY	PHONE NUMBER
HINDS	601-960-1476	LAMAR	601-794-5378
HOLMES	662-235-5126	LAUDERDALE	601-482-9852
HUMPHREYS	662-247-0457	LAWRENCE	601-587-7664
ISSAQUENA	662-907-1960	LEAKE	601-267-5757
ITAWAMBA	662-862-5600	LEE	662-432-2950
JACKSON	228-769-3111	LEFLORE	662-453-1428
JASPER	601-764-3800	LINCOLN	601-833-8561
JEFFERSON	601-786-8422	LOWNDES	662-329-5110
JEFFERSON DAVIS	601-792-5377	MADISON	601-859-4188
JONES	601-649-3535	MARION	601-736-9627
KEMPER	601-527-2393	MARSHALL	662-551-6146
LAFAYETTE	662-234-5667	MONROE	662-369-3683

# COUNTY EMERGENCY MANAGEMENT AGENCY CONTACT LIST



<b>COUNTY</b>	<b>PHONE NUMBER</b>	<b>COUNTY</b>	<b>PHONE NUMBER</b>
<b>MONTGOMERY</b>	662-283-1121	<b>QUITMAN</b>	662-326-7909
<b>MBCI</b>	601-656-0620	<b>RANKIN</b>	601-825-1499
<b>NESHOBA</b>	601-656-3121	<b>SCOTT</b>	601-469-4100
<b>NEWTON</b>	601-635-4301	<b>SHARKEY</b>	662-873-4355
<b>NOXUBEE</b>	662-726-5111	<b>SIMPSON</b>	601-847-3434
<b>OKTIBBEHA</b>	662-338-1076	<b>SMITH</b>	601-782-9151
<b>PANOLA</b>	662-487-2430	<b>STONE</b>	601-928-3077
<b>PEARL RIVER</b>	601-795-3058	<b>SUNFLOWER</b>	662-887-6253
<b>PERRY</b>	601-964-8474	<b>TALLAHATCHIE</b>	662-647-2540
<b>PIKE</b>	601-684-3564	<b>TATE</b>	662-562-5012
<b>PONTOTOC</b>	662-509-8585	<b>TIPPAH</b>	662-587-0325
<b>PRENTISS</b>	662-728-8198	<b>TISHOMINGO</b>	662-423-7028



# COUNTY EMERGENCY MANAGEMENT AGENCY CONTACT LIST

COUNTY	PHONE NUMBER
TUNICA	662-363-4012
UNION	662-534-1992
WALTHALL	601-827-5116
WARREN	601-636-1544
WASHINGTON	662-335-1945
WAYNE	601-735-2184
WEBSTER	662-552-7007
WILKINSON	601-645-2828
WINSTON	662-773-3651
YALOBUSHA	662-675-2556
YAZOO	662-746-1569



# DISASTER SUPPLY KIT CHECKLIST

- 3 gallons of water per person
- Peanut butter
- Dried or canned meats
- Crackers
- granola bars/dry cereal
- Canned food
- Flashlight & batteries
- Pet food
- First aid kit
- Hygiene Items

# ADDITIONAL DISASTER SUPPLY KIT ITEMS

- Weather radio
- Extra cash
- Copies of medical, home & car insurance documents
- Birth certificates
- Social security card
- Marriage license
- Passport
- waterproof bag for important documents
- Can opener



# MISSISSIPPI EMERGENCY MANAGEMENT AGENCY



PREPARING FOR TOMORROW'S DISASTERS TODAY



@MSEMAORG



@MSEMA



@MSEMAORG1



MSEMA.ORG



MISSISSIPPI EMERGENCY  
MANAGEMENT AGENCY



MEMA