



PREPARING FOR TOMORROW'S DISASTERS TODAY

# 2018 ANNUAL REPORT

MISSISSIPPI EMERGENCY MANAGEMENT AGENCY

[WWW.FACEBOOK.COM/MSEMAORG](http://WWW.FACEBOOK.COM/MSEMAORG)

[WWW.TWITTER.COM/MSEMA](http://WWW.TWITTER.COM/MSEMA)

[WWW.LINKEDIN.COM/COMPANY/MSEMA](http://WWW.LINKEDIN.COM/COMPANY/MSEMA)

[WWW.YOUTUBE.COM/MSEMAORG1](http://WWW.YOUTUBE.COM/MSEMAORG1)



SMARTPHONE APP: SEARCH MISSISSIPPI EMA

[WWW.MSEMA.ORG](http://WWW.MSEMA.ORG)





# TABLE OF CONTENTS

02 – TABLE OF CONTENTS
03 – OVERVIEW
06 – STATE OF EMERGENCIES
08 – FEMA DECLARED DISASTER DR-4350
10 – OFFICE OF PREPAREDNESS
14 – OFFICE OF RADIOLOGICAL EMERGENCY PREPAREDNESS
18 – OFFICE OF SUPPORT SERVICES
20 – EMERGENCY MANAGEMENT PERFORMANCE GRANT
22 – OFFICE OF RECOVERY
24 – OFFICE OF RESPONSE
28 – OFFICE OF MITIGATION
30 – OFFICE OF OUTREACH SERVICES
32 – EXTERNAL AFFAIRS
38 – EMERGENCY MANAGEMENT ASSISTANCE COMPACT MISSIONS
42 – PHOTOS
44 – MEMA APP

## FY 2018 OVERVIEW

*The Mississippi Emergency Management Agency's mission is to safeguard Mississippi and her citizens by fostering a culture of preparedness, executing timely response during disaster, and quickly restoring quality of life post event.*

The Agency was created by Executive Order in 1979 (formerly the Civil Defense Council), and is comprised of 155 employees, led by Executive Director Gregory Michel. MEMA is comprised of seven core offices: Mitigation, Outreach Services, Preparedness, Radiological Emergency Preparedness, Recovery, Response and Support Services.

The MEMA headquarters has been located in Pearl since 2006 in a state-of-the-art facility which has become the model for other states and countries. Within the headquarters is the State Emergency Operations Center that houses state and federal agencies, as well as other responding organizations to a disaster. The headquarters also houses a Mississippi State Department of Health satellite office and the Mississippi Department of Public Safety's Fusion Center.

The state is divided into nine MEMA districts, with each having a resident Area Coordinator to service the county emergency management director with planning, training, exercise, response and recovery for all types of emergencies and disasters.





## FY 2018 OVERVIEW CONTINUED

Since 2005, the year Hurricane Katrina devastated south Mississippi, MEMA has coordinated the disbursement of nearly \$3.5 billion dollars in public assistance to local governments for recovery in 18 presidentially declared disasters. In addition, nearly \$2 billion dollars in FEMA grants have been disbursed to individuals and families to recover. MEMA has also disbursed more than \$481 million in a wide variety of Federal Mitigation Grants that help strengthen and reduce the impacts of future disasters around the state.

Mississippi saw one presidentially declared disaster in FY18 on October 6, 2017 with Hurricane Nate. The Category One Hurricane caused nearly \$20 million in public infrastructure damage in George, Greene, Hancock, Harrison, Jackson and Stone counties.

Director Michel's commitment is to continue finding efficiencies that provide Mississippi's 2.9 million residents with a positive return on investment for every dollar MEMA receives. That includes cross training all 155 full-time positions as well as leveraging technology wherever possible to save taxpayer money.

MEMA is always "Preparing for Tomorrow's Disasters Today," and working every day to lead the recovery for all our communities hit with past disasters.

This annual report highlights the work of MEMA's staff that works tirelessly for the people of Mississippi 24-hours a day, 365 days a year.



**"Our mission, at the Mississippi Emergency Management Agency, is to safeguard Mississippi and her citizens by fostering a culture of preparedness, executing timely response during disaster, and quickly**

**restoring quality of life post event. Emergency Management is a comprehensive approach for administering and governing efforts in mitigation, preparedness, response, and recovery. Recognizing that emergency management begins and ends at the local level, the Mississippi Emergency Management Agency is a vital asset for the state of Mississippi. Regardless of the threat, MEMA will plan and prepare for emergency scenarios, respond to and support local EMAs during emergency events, and coordinate and resource recovery efforts in the wake of a disaster."** – GREGORY MICHEL, EXECUTIVE DIRECTOR





# STATE OF EMERGENCIES

JULY 1, 2017 – JUNE 30, 2018

"In 2018 MEMA responded to a major non-weather related (man-made) disaster. The Yankee 72 plane crash was a tragic disaster that resulted in the death of 16 American Servicemembers and the loss or damage to millions of dollars of equipment, property, and agriculture. This event required multiple local, state, and federal agencies to work in a coordinated manner to recover the Service members and all of their equipment in a timely, efficient, and thorough manner. As tragic as the Yankee 72 crash was, it exercised aspects of emergency management that are not typically executed during natural disasters. This is a testament to the emergency management community and their ability to adapt and respond to all emergency scenarios." - GREGORY MICHEL, EXECUTIVE DIRECTOR

## JULY 10, 2017 – UNITED STATES MARINES AIRCRAFT CRASH

On July 10, 2017, at approximately 4 pm, a United States Marines Corp KC-130 aircraft crashed in Leflore County, killing all 16 servicemen (15 marines, 1 sailor) on board. The disaster was the single worst loss of life in Marine aviation since 2005.

MEMA joined the Marines and Leflore County in the unified coordination group, to assist with the logistics, planning and operational portion of the recovery process of the fallen servicemen and their equipment.

## OCTOBER 6, 2017 – HURRICANE NATE

- Damaged reported in at least six counties after Hurricane Nate made landfall on the Mississippi Gulf Coast.
- FEMA Disaster 4350
- Executive Order No. 1407

On October 7, 2017, Mississippi experienced its first Hurricane since 2012. Hurricane Nate made its second landfall in Harrison County late that Saturday night as a Category One Hurricane, with winds in excess of 80 miles per hour. No deaths nor injuries, due to the hurricane, were reported to MEMA.



## JANUARY 19, 2018 – WINTER WEATHER

- State severely affected by significant snow and ice, accompanied by prolonged subfreezing temperatures.

A significant winter weather event impacted a large portion of the state. Heavy snow and ice caused hazardous driving conditions, damage to homes, businesses, and public properties. School districts across the state closed schools for multiple days to help ensure the safety of their communities.



## MAY 26, 2018 – SUB-TROPICAL STORM ALBERTO

- First named storm of 2018
- Executive Order No. 1421

On May 26, 2018, the National Hurricane Center issued tropical storm and storm surge watches for the Mississippi Gulf Coast. The storm would make landfall near the Florida panhandle and not impact our state.







**"Hurricane Nate hit the coast of Mississippi with winds more than 80 miles per hour, and a storm surges up to 11 feet. No deaths or injuries were reported despite over 400 homes and businesses being damaged. This is a testament to the local responder's efforts in evacuating certain areas, opening shelters for those individuals in flood-prone areas and the rebuilding efforts through mitigation projects to protect the infrastructure and promote resilience of the coastal communities."** – STEPHEN C. McCRAANEY, DEPUTY DIRECTOR

# FEMA DECLARED DISASTER

## HURRICANE NATE – DR-4350

On October 7, 2017, Mississippi experienced its first Hurricane since 2012. Hurricane Nate made its second landfall in Harrison County late that Saturday night as a Category One Hurricane, with winds in excess of 80 miles per hour. No deaths nor injuries, due to the hurricane, were reported to MEMA.

Strong winds and storm surge were the main issues related to Nate. Storm surge of up to 11 feet were recorded in certain areas of Jackson County.

At the height of the Hurricane, close to 50,000 customers statewide lost power, due to the strong winds and surge of the hurricane. In less than one week, power had been restored.

President Donald Trump declared six counties in Mississippi for federal disaster aid.

Those counties were eligible for Public Assistance through FEMA, which covers reimbursements to roads, bridges, and other forms of infrastructure.

### **PRESIDENTIAL DISASTER DECLARATION GRANTED ON NOVEMBER 22, 2017.**

- Counties declared: George, Greene, Hancock, Harrison, Jackson and Stone.
- More than 400 homes and businesses damaged.
- 6.294 million dollars awarded in public assistance.





“Our tenacious planning, training and exercises now, will set the conditions for a strong Mississippi after any disaster. Posturing for Preparedness while remaining situationally flexible is key to disaster resiliency and response.” – BRYAN OLIER, OFFICE OF PREPAREDNESS DIRECTOR



# OFFICE OF PREPAREDNESS

## PLANNING

The Planning Bureau within the Office of Preparedness is responsible for the following plans, procedures and programs:

Updating and maintaining the *State Comprehensive Emergency Management Plan (CEMP)*, the *MEMA Continuity of Operations (COOP) Plan*, the *MEMA Comprehensive Hurricane Preparedness Plan*, the *State of Mississippi Continuity of Government (COG) Plan* and the *MEMA New Madrid Seismic Zone (NMSZ) Operational Plan*. Additionally, the Planning Bureau implements activities allowed under the *National Earthquake Hazards Reduction Program (NEHRP) Grant Program*, maintains oversight for the *Local Emergency Planning Committee (LEPC) Program* and Tier II reporting, and assists political subdivisions in preparing and maintaining local comprehensive emergency management plans.

In January, the Planning Bureau presented the 2018 version of the State CEMP to the Governor for signature. The Plan was signed on January 26, 2018 and provided to all stakeholders at the Spring ECO meeting. Additionally, the Planning Bureau conducted the following activities:

- Completed a full re-write of the state's New Madrid Seismic Zone (NMSZ) Operational Plan and distributed to stakeholders.
- Developed and distributed Incident Specific and Support Annex templates to 82 counties and the Mississippi Band of Choctaw Indians for development and inclusion into their county CEMP.

- Coordinated Statewide participation in the 2017 Shake Out Drill by distributing invitation letters, flyers, and Earthquake Preparedness Guides to school districts, local emergency management offices, community colleges, universities and public libraries statewide.
- Assisted the Mississippi Office of Homeland Security with completing and submitting the 2017 Threat Hazard Identification and Risk Assessment (THIRA) and State Preparedness Report (SPR)
- Attended and participated in the bi-annual Pandemic Influenza Steering Committee meetings with the Mississippi State Department of Health (MSDH).
- Attended LEPC meetings and assisted at least ten counties with completing a new Local Emergency Planning Committee (LEPC) application.
- Developed Standard Operating Procedures for both office and State Emergency Operations Center plans section activation.
- Attended the Emergency Management Accreditation Program (EMAP) Review Committee meeting in Falls Church, Virginia where the state was awarded reaccreditation in October 2017.



**EXERCISE BUREAU**

The Exercise Bureau consists of four Exercise Officers and a Bureau Director. The Bureau works with federal, state, local partner agencies and other stakeholders to design, coordinate and facilitate exercises that validate emergency planning efforts. These efforts also assist in identifying training needs to promote and support a culture of preparedness for the whole community. Exercise Officers work to align exercise objectives with the mission areas and core capabilities identified in the National Preparedness Goal (NPG), training provided in support of the National Incident Management System (NIMS), and to identify improvement planning opportunities with Homeland Security Exercise Evaluation Program (HSEEP) guidance. The Bureau is additionally responsible for tracking and documenting exercise conduct and improvement planning information for recipients of Emergency Management Performance Grant (EMPG) funding.

The Exercise Bureau designed and facilitated 32 exercises and offered exercise process assistance to numerous stakeholders. The bureau also conducted Training and Exercise Planning Workshops (TEPW) with federal, state and local partners to gather information that sets the (2019-2020) program priorities for Mississippi’s Multi Year Training and Exercise Plan (MYTEP).

**TRAINING BUREAU**

The Training Bureau consist of five training officers and a Director/State Training Officer. The training officers instruct/coordinate training opportunities for local emergency managers, first responders, state agencies,

volunteer organizations, tribal communities and businesses. The bureau ensures their coordinating efforts provide training to the whole community in support of the National Incident Management System (NIMS).

MEMA’s training program offers courses in the following categories:

- Emergency Planning
- Basic Emergency Management
- Mitigation
- Preparedness
- Incident Command
- Response and Recovery
- Communication
- Cyber Security

The National Emergency Management Advanced Academy will be offered and hosted regionally at the Mississippi Emergency Management Agency beginning December 10, 2018. The Advanced Academy consist of the following courses:

- E0451 Advanced I – A Survey of Advanced Concepts in Emergency Management
- E0452 Advanced II – Assessment and Application of Professional Style in Emergency Management
- E0453 Advanced III – Advanced Concepts and Issues in the Emergency Management Organization
- E0454 Advanced IV - Advanced Concepts and Issues in the Emergency Management Community and Profession



**STATE EMERGENCY OPERATIONS CENTER ACTIVATION (SEOC)**

The Planning Bureau is responsible for initiating the Incident Action Planning Cycle during SEOC activation for incidents and events. Additionally, the Planning Bureau provides Incident Action Planning support to local jurisdictions for exercises and real-world events.

The Planning Bureau supported SEOC Plans Section activation for four real world events including Hurricane Nate, the Spring 2018 Flooding event, the 2018 April severe weather event and Subtropical Storm Alberto. Additionally, the Planning Bureau provided Incident Action Planning Support to local jurisdictions for a KC-130 aircraft crash in Leflore County and a Mississippi Spring Break Event in Harrison County.



*Training exercise and planning workshop at Hinds Community College*

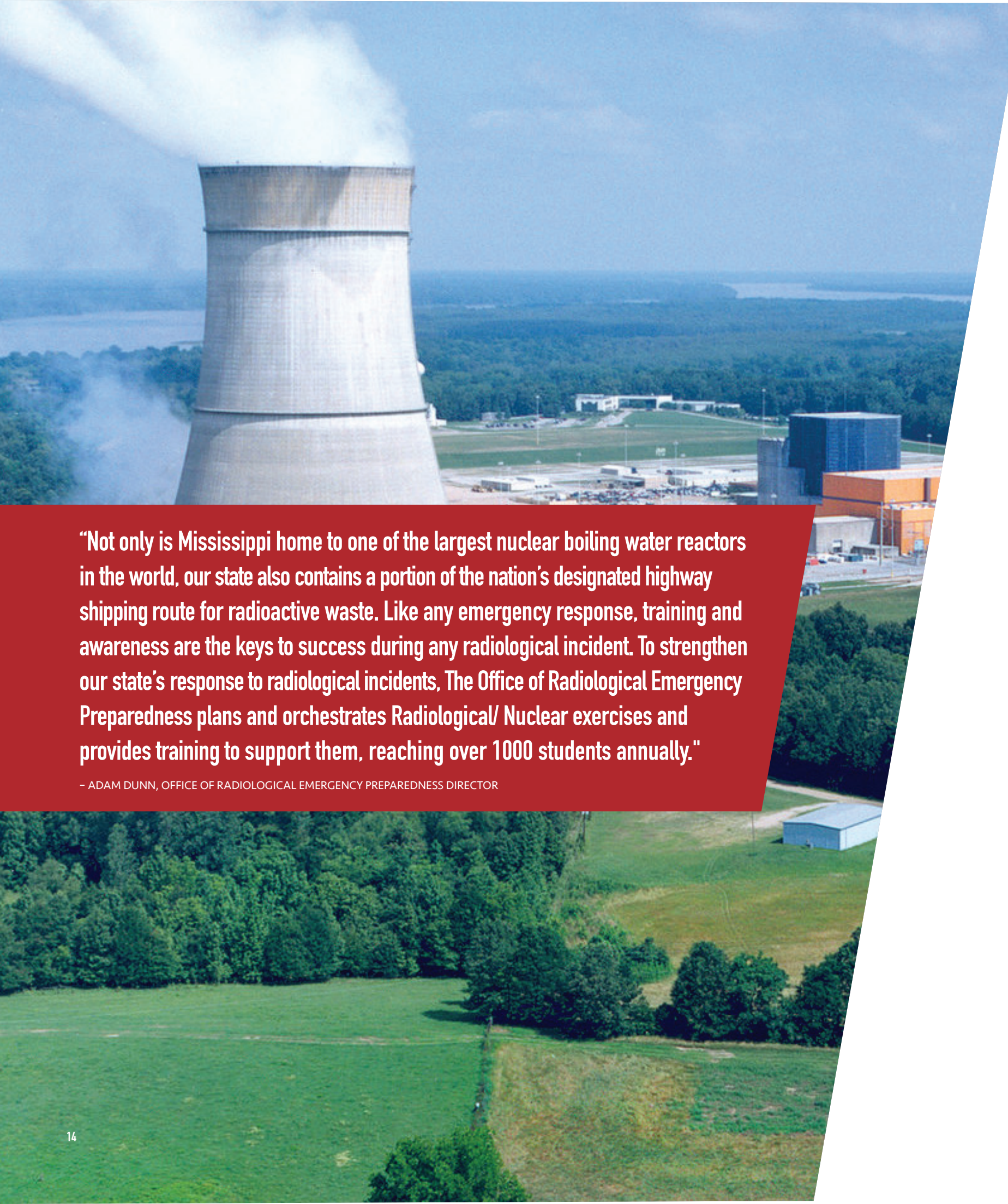
**THE BASIC ACADEMY CONSISTS OF THE FOLLOWING COURSES:**

- L0101, Foundations of Emergency Management – (80 hours) – 10 days
- L0102, Science of Disaster – (approximately 24 hours) – 3 days
- L0103, Planning: Emergency Operations – (16 hours) – 2 days
- L0104, Exercise Design – (16 hours) – 2 days
- L0105, Public Information and Warning – (16 hours) – 2 days

**TOTAL COURSE HOURS: 152 HOURS**

DATE	TOTAL PERSONNEL TRAINED	TOTAL NUMBER OF CLASSES
July 1 thru September 2017	1332	67
October 1 thru December 2017	1186	41
January thru March 2018	705	43
April thru June 2018	994	55





# OFFICE OF RADIOLOGICAL EMERGENCY PREPAREDNESS

**“Not only is Mississippi home to one of the largest nuclear boiling water reactors in the world, our state also contains a portion of the nation’s designated highway shipping route for radioactive waste. Like any emergency response, training and awareness are the keys to success during any radiological incident. To strengthen our state’s response to radiological incidents, The Office of Radiological Emergency Preparedness plans and orchestrates Radiological/ Nuclear exercises and provides training to support them, reaching over 1000 students annually.”**

– ADAM DUNN, OFFICE OF RADIOLOGICAL EMERGENCY PREPAREDNESS DIRECTOR

*The Mission of this office is to provide first responders and volunteers with radiological training and support to protect the health and safety of the public and the environment. This office is uniquely qualified to be an integral partner for the State of Mississippi’s Fixed Site Nuclear Program, Waste Isolation Pilot Program (WIPP) and Preventive Radiological Nuclear Detection Programs (PRND). The Office of Radiological Preparedness accomplishes this by providing leadership, coordinating and conducting meetings, training, drills and evaluated exercises.*

## **TRAINING**

This past fiscal year, the Office of Radiological Emergency Preparedness conducted 48 classes that reached close to 900 students.

The Office of Radiological Preparedness offers and executes a wide variety of training and exercises, with the goal of building and maintain preparedness, prevention, protection, responsiveness, recovery and mitigation of actual or potential radiological or nuclear threats and hazards.

## **MISSISSIPPI RADIOLOGICAL EMERGENCY PREPAREDNESS PLAN**

In 2018, the plan was updated to include the improvements of the “AtHoc” emergency notification system and the Office’s Homeland Security Information Network (HSIN). This allows the capability to generate reports and reach even more emergency response organizations. The plan now includes the Waste Isolation Pilot Plant Program and opens electronic accessibility for first responders through the use of Portable Access Devices.

## **JOINT INFORMATION CENTER (JIC)**

The joint information center, located at Mississippi Emergency Management Agency in Pearl, Mississippi, continues its joint efforts with State and Entergy efforts at the Grand Gulf Nuclear Generating Station. The JIC received upgrades and expansions to their facility, with new media cameras, podiums, and video communication equipment. With continual efforts and upgrades, this center will remain a model of “Best Practice” for the industry and continue to serve as a model for other regional facilities.



## OFFICE OF REP CONTINUED CONTINUED

### FINANCIAL COMMUNICATION STRATEGY AND TECHNOLOGY BUSINESS PLAN

This plan will provide a strategic road map for improving communications and financial information sharing during day to day and emergency operations during all hazardous events. The single biggest threat to the Agency is the lack of timely and accurate information shared during an event that challenges the safety of the public. Implementation of this strategy will not only aid the MEMA financial group, but it will improve situational awareness of the organization.

### RADIOLOGICAL EMERGENCY PREPAREDNESS HANDBOOK REVISION

In July of 2018, the third version of the handbook was distributed to participants in the Grand Gulf Evaluated Exercise. Revisions were distributed via the Homeland Security Information Network Portal for distribution and in hard copy to required participants.

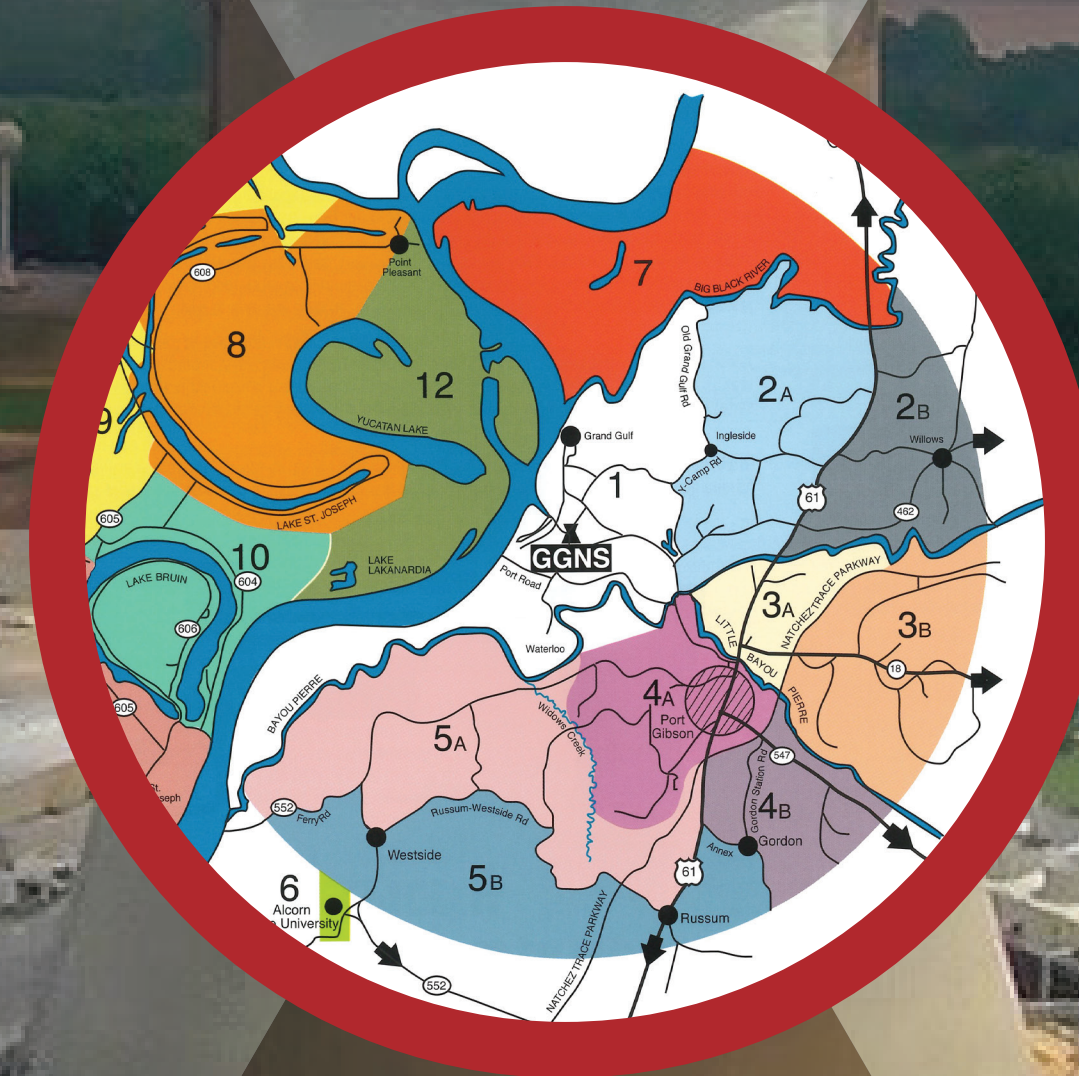
### PREVENTIVE RADIOLOGICAL/ NUCLEAR DETECTION PROGRAM (PRND)

This program was developed by the state of Mississippi and implemented in 2018 with support from the Domestic Nuclear Detection Office (DNDO). This program fulfills Mississippi's need to secure the state and its critical

infrastructure, key resources, and other potential extremist' targets from a potential radiological/ nuclear threat. This project is managed by a PRND Executive Committee and chaired by the REP Office Director. The plan is now available on the Rep Homeland Security Information Network (HISN) and is now made available to emergency responders via Portable Access Devices.

### WASTE ISOLATION PILOT PLANT PROGRAM

On March 23-24, 2018, the Radiological Emergency Preparedness staff, and local, state, and federal authorities participated in a three-day nuclear waste isolation exercise. This exercise tested the proficiency and capability of public and private emergency preparedness systems and the State's Preventive Radioactive Nuclear Detection program (PRND). The exercise was located at the Mississippi State Fire Academy and response vehicles were staged at the MEMA campus awaiting dispatch. This exercise helped build relationships among local, state, federal and other emergency and non-profit partners. Among the participants in the exercise was the Baptist Hospital in Jackson, MS, Merit Health River Oaks in Flowood, MS, and students from Belhaven University Theater Department, Belhaven University School of Nursing, and Mississippi College's Department of Communication/Journalism.





# OFFICE OF SUPPORT SERVICES

**"MEMA's success is our business."** - CRYSTAL THOMPSON, OFFICE OF SUPPORT SERVICES DIRECTOR



## INFORMATION TECHNOLOGY

9 PHYSICAL AND 8 VIRTUAL SERVERS • 234 COMPUTERS FOR EMPLOYEES, JIC AND EOC FLOOR • 140 EMAIL ACCOUNTS • 150 ACTIVE DIRECTORY ACCCOUNTS



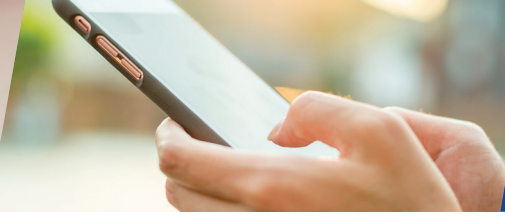
## LOGISTICS DEPLOYMENT

SANDBAGS 330,000 • TARPS 350 • GENERATORS • LIGHT TOWERS



## FLEET

57 VEHICLES IN FLEET



## PROPERTY

2,002 PROPERTY ITEMS MANAGED



## FACILITIES

UPGRADED GENERATOR SWITCH GEAR • UPGRADED BOILER • UPGRADED BUILDING AND OUTDOOR LIGHTS TO LED • PAINTED INTERIOR HALLWAYS • PARKING LOT REPAIR

**14,820 PAYMENT ENTRIES**  
**\$120,058,802 IN GRANTS AND GENERAL FUNDS**

EQUIPMENT - \$70,724	
TRAVEL - \$ 288,529	
COMMODITIES - \$709,981	
CONTRACTUAL SERVICES - \$ 6,894,760	█
SALARIES - \$ 7,458,324	█
GRANT PAYMENTS - \$104,636,484	█



**FY 2018  
EMERGENCY MANAGEMENT PERFORMANCE GRANT  
STATE OF MISSISSIPPI – COUNTY FUNDING**

COUNTY	BASE ALLOCATION	POPULATION	POPULATION ALLOCATION	TOTAL 2018 ALLOCATION
ADAMS	\$10,000.00	31,003	\$19,221.86	\$29,221.86
ALCORN	\$10,000.00	37,210	\$23,070.20	\$33,070.20
AMITE	\$10,000.00	12,447	\$7,717.14	\$17,717.14
BENTON	\$10,000.00	8,312	\$5,153.44	\$15,153.44
BOLIVAR	\$10,000.00	31,945	\$19,805.90	\$29,805.90
CALHOUN	\$10,000.00	14,492	\$8,985.04	\$18,985.04
CARROLL	\$10,000.00	10,139	\$6,286.18	\$16,286.18
CHICKASAW	\$10,000.00	17,146	\$10,630.52	\$20,630.52
CHOCTAW	\$10,000.00	8,278	\$5,132.36	\$15,132.36
CLAIBORNE	\$10,000.00	8,950	\$5,549.00	\$15,549.00
CLARKE	\$10,000.00	15,828	\$9,813.36	\$19,813.36
CLAY	\$10,000.00	19,640	\$12,176.80	\$22,176.80
COAHOMA	\$10,000.00	23,154	\$14,355.48	\$24,355.48
COPIAH	\$10,000.00	28,516	\$17,679.92	\$27,679.92
COVINGTON	\$10,000.00	19,079	\$11,828.98	\$21,828.98
DESOTO	\$10,000.00	178,751	\$110,825.62	\$120,825.62
FORREST	\$10,000.00	75,471	\$46,792.02	\$56,792.02
FRANKLIN	\$10,000.00	7,765	\$4,814.30	\$14,814.30
GEORGE	\$10,000.00	24,094	\$14,938.28	\$24,938.28
GREENE	\$10,000.00	13,345	\$8,273.90	\$18,273.90
GRENADA	\$10,000.00	21,087	\$13,073.94	\$23,073.94
HANCOCK	\$10,000.00	47,053	\$29,172.86	\$39,172.86
HARRISON	\$10,000.00	205,027	\$127,116.74	\$137,116.74
HINDS	\$10,000.00	239,497	\$148,488.14	\$158,488.14
HOLMES	\$10,000.00	17,739	\$10,998.18	\$20,998.18
HUMPHREYS	\$10,000.00	8,342	\$5,172.04	\$15,172.04
ISSAQUENA	\$10,000.00	1,339	\$830.18	\$10,830.18
ITAWAMBA	\$10,000.00	23,508	\$14,574.96	\$24,574.96
JACKSON	\$10,000.00	142,152	\$88,134.24	\$98,134.24
JASPER	\$10,000.00	16,582	\$10,280.84	\$20,280.84
JEFFERSON	\$10,000.00	7,262	\$4,502.44	\$14,502.44
JEFFERSON DAVIS	\$10,000.00	11,314	\$7,014.68	\$17,014.68
JONES	\$10,000.00	67,930	\$42,116.60	\$52,116.60
KEMPER	\$10,000.00	9,883	\$6,127.46	\$16,127.46
LAFAYETTE	\$10,000.00	54,374	\$33,711.88	\$43,711.88
LAMAR	\$10,000.00	61,374	\$38,051.88	\$48,051.88
LAUDERDALE	\$10,000.00	76,155	\$47,216.10	\$57,216.10
LAWRENCE	\$10,000.00	12,643	\$7,838.66	\$17,838.66
LEAKE	\$10,000.00	22,715	\$14,083.30	\$24,083.30
LEE	\$10,000.00	84,933	\$52,658.46	\$62,658.46
LEFLORE	\$10,000.00	29,223	\$18,118.26	\$28,118.26
LINCOLN	\$10,000.00	34,347	\$21,295.14	\$31,295.14

COUNTY	BASE ALLOCATION	POPULATION	POPULATION ALLOCATION	TOTAL 2018 ALLOCATION
LOWNDES	\$10,000.00	59,186	\$36,695.32	\$46,695.32
MADISON	\$10,000.00	104,618	\$64,863.16	\$74,863.16
MARION	\$10,000.00	25,069	\$15,542.78	\$25,542.78
MARSHALL	\$10,000.00	35,619	\$22,083.78	\$32,083.78
MBCI	\$10,000.00	10,590	\$6,565.80	\$16,565.80
MONROE	\$10,000.00	35,872	\$22,240.64	\$32,240.64
MONTGOMERY	\$10,000.00	10,173	\$6,307.26	\$16,307.26
NESHOPA	\$10,000.00	29,369	\$18,208.78	\$28,208.78
NEWTON	\$10,000.00	21,185	\$13,134.70	\$23,134.70
NOXUBEE	\$10,000.00	10,742	\$6,660.04	\$16,660.04
OKTIBBEHA	\$10,000.00	49,799	\$30,875.38	\$40,875.38
PANOLA	\$10,000.00	33,994	\$21,076.28	\$31,076.28
PEARL RIVER	\$10,000.00	55,270	\$34,267.40	\$44,267.40
PERRY	\$10,000.00	12,032	\$7,459.84	\$17,459.84
PIKE	\$10,000.00	39,468	\$24,470.16	\$34,470.16
PONTOTOC	\$10,000.00	31,640	\$19,616.80	\$29,616.80
PRENTISS	\$10,000.00	25,261	\$15,661.82	\$25,661.82
QUITMAN	\$10,000.00	7,269	\$4,506.78	\$14,506.78
RANKIN	\$10,000.00	152,080	\$94,289.60	\$104,289.60
SCOTT	\$10,000.00	28,420	\$17,620.40	\$27,620.40
SHARKEY	\$10,000.00	4,435	\$2,749.70	\$12,749.70
SIMPSON	\$10,000.00	26,947	\$16,707.14	\$26,707.14
SMITH	\$10,000.00	16,078	\$9,968.36	\$19,968.36
STONE	\$10,000.00	18,112	\$11,229.44	\$21,229.44
SUNFLOWER	\$10,000.00	25,981	\$16,108.22	\$26,108.22
TALLAHATCHIE	\$10,000.00	14,125	\$8,757.50	\$18,757.50
TATE	\$10,000.00	28,441	\$17,633.42	\$27,633.42
TIPPAH	\$10,000.00	21,969	\$13,620.78	\$23,620.78
TISHOMINGO	\$10,000.00	19,542	\$12,116.04	\$22,116.04
TUNICA	\$10,000.00	10,024	\$6,214.88	\$16,214.88
UNION	\$10,000.00	28,556	\$17,704.72	\$27,704.72
WALTHALL	\$10,000.00	14,499	\$8,989.38	\$18,989.38
WARREN	\$10,000.00	46,768	\$28,996.16	\$38,996.16
WASHINGTON	\$10,000.00	46,221	\$28,657.02	\$38,657.02
WAYNE	\$10,000.00	20,446	\$12,676.52	\$22,676.52
WEBSTER	\$10,000.00	9,765	\$6,054.30	\$16,054.30
WILKINSON	\$10,000.00	8,804	\$5,458.48	\$15,458.48
WINSTON	\$10,000.00	18,246	\$11,312.52	\$21,312.52
YALOBUSHA	\$10,000.00	12,497	\$7,748.14	\$17,748.14
YAZOO	\$10,000.00	27,057	\$16,775.34	\$26,775.34
				\$2,665,252.06
			COUNTY TOTAL PLUS MATCH	\$5,330,504.12
			MEMA TOTAL PLUS MATCH	\$3,336,215.96
			M&A PLUS MATCH	\$387,741.92
			<b>GRAND TOTAL</b>	<b>\$9,054,462.00</b>





**“The Recovery Office is devoted to providing federal and state reimbursements throughout the State under the Public Assistance grant program. Over the past year the Recovery Team has disbursed over \$80M to eligible local governments and certain private non-profits impacted by federally declared disasters.”** – CLAYTON FRENCH, OFFICE OF RECOVERY DIRECTOR

# OFFICE OF RECOVERY

## FY 2018 PUBLIC ASSISTANCE

### MONEY DISBURSED

DISASTER 1550 - Hurricane Ivan (2004) = **\$961,995.41**

DISASTER 1604 - Hurricane Katrina (2005) = **\$49,912,850.20**

DISASTER 1764 - Severe Storms and Tornadoes (2008) = **\$81,173.49**

DISASTER 1794 - Hurricane Gustav (2008) = **\$1,678,219.54**

DISASTER 1837 - Severe Storms & Tornadoes (2009) = **\$33,122.00**

DISASTER 1906 - Severe Storms, Tornadoes & Flooding (2010) = **\$8,038.65**

DISASTER 1916 - Severe Storms & Flooding (2010) = **\$195,139.07**

DISASTER 1972 - Severe Storms & Tornadoes (2011) = **\$374,189.05**

DISASTER 1983 - Flooding (2011) = **\$53,595.48**

DISASTER 4081 - Hurricane Issac (2012) = **\$5,037,555.43**

DISASTER 4101 - Severe Storms, Tornadoes & Floods (2013) = **\$214,003.06**

DISASTER 4175 - Severe Storms, Tornadoes & Floods (2014) = **\$9,229,237.32**

DISASTER 4205 - Severe Storms & Tornadoes (2014) = **\$865,945.78**

DISASTER 4248 - Severe Storms, Tornadoes & Straight-Line Winds (2015) = **\$1,206,203.44**

DISASTER 4268 - Severe Storms & Flooding (2016) = **\$1,491,077.01**

DISASTER 4295 - Pine Belt Tornado & Straight-Line Winds (2017) = **\$3,681,030.59**

DISASTER 4314 - Severe Storms, Tornadoes, Straight-Line Winds & Flooding (2017) = **\$7,120,315.92**

**TOTAL - \$82,143,691.44**





**"Our common goal is to consistently do our best to provide accurate and timely response efforts to the people of Mississippi before, during, and after a disaster strikes."**

- DAVE SNIDER, OFFICE OF RESPONSE DIRECTOR

# OFFICE OF RESPONSE

*The Office of Response provides the core, coordinated state operational response capability needed to save and sustain lives, minimize suffering, and protect property in a timely and effective manner in communities that become overwhelmed by natural disasters, acts of terrorism, or other emergencies.*

SEOC Activations from July 1, 2017 through June 30, 2018:

- KC-130 United States Marines aircraft crash, July 10, 2017
- Hurricane Nate, 05 -16 Oct 2017, Level-1 Activation
- Ice Storm, 12 - 18 Jan 2018, Level 4 Virtual
- Spring Flooding, Feb - April 2018, Level-3 and Virtual
- Lauderdale County/Meridian Tornado, May 2018, Level-3 Partial
- Tropical Storm Alberto, May 2018, Level-3 Partial

## BUREAUS

The Communications Bureau operates the state warning point, 24/7/365, with the responsibility of alerting state and local officials to all natural or man-made incidents. It coordinates emergency radio communications

on the state's Wireless Information Network (MSWIN), to provide assistance and advise local emergency managers.

Finally, the Geographical Information Systems Bureau (GIS) provides detailed mapping for local, state and federal entities for planning, response and recovery operations.

Averages more than 3,500 alerts a year, inclusive of severe thunderstorms, flooding, tornadoes, hurricanes, earthquakes, Grand Gulf Nuclear Plant status and hazardous materials incidents.

- Total Calls to the State Warning Point/ Communications FY 2017: 2440

**WEATHER INCIDENTS: 862**  
**HAZARDOUS MATERIALS: 464**  
**TRANSPORTATION INCIDENTS: 175**  
**MAN-MADE: 116**  
**TOTAL: 1,617**

- AtHOC Alerts FY 2017 sent between July 1, 2017 and June 30, 2018:

**HIGH SEVERITY ALERTS: 189**  
**MODERATE SEVERITY ALERTS: 169**  
**LOW SEVERITY ALERTS: 83**  
**INFORMATIONAL ALERTS: 3025**  
**TOTAL: 3,466**



## OFFICE OF RESPONSE CONTINUED

### THE FIELD SERVICES BUREAU

Has nine Area Coordinators (AC's) and two Field Service Specialists. They assist and advise the local emergency managers of all 82 counties and the Mississippi Band of Choctaw Indians. The bureau is also responsible for operating and maintaining the three State Emergency Response Team (SERT) trailers, in addition to the MEMA Unmanned Aircraft Systems (UAS) Program. The UAS Program provides real-time video capability via Rotor and fixed wing aircrafts, piloted by FAA certified Part 107 pilots.

### GEOGRAPHICAL INFORMATION SYSTEMS (GIS) OFFICE

Maintains the Digital Damage Assessment Program, the MEMA digital Common Operating Picture (COP) and provides detailed mapping for local, state and federal entities for planning, response and recovery operations.

In 2018 MEMA GIS produced mapping and data products, collected and maintained GIS data in support of weather events, training, exercises, and other planned events to include a presidential visit.

- Over 300 weather related mapping and data products to support weather related events.
- More than 50 mapping and data products to support state and county level exercises.
- Over 25 web maps and web map applications to provide situational awareness and event data to our partners and stakeholders.
- Provided the United States National Grid search and rescue maps and it's damage assessment data to 23 counties in Mississippi.
- Provided mobile damage assessment training to over 100 Mississippi county personnel.

### OPERATIONS BUREAU

This Bureau manages the State Emergency Operations Center, coordinates Emergency Support Functional requests for state and local response, administers the state's assets tracking system known as WebEOC and is responsible for the MEMA Daily Event and Situation Rooms, along with the Daily Update Brief.



### SERT DEPLOYMENTS

EXERCISE SUPPORT – 9

OPERATIONAL DEPLOYMENTS – 7

### UAS ACTIVITY

EXERCISE SUPPORT – 6

OPERATIONAL DEPLOYMENTS – 5

LIVE-VIDEO EVENTS – 10





**"We save lives and protect property by reducing risk. We invest in the safety of the community long before and after a disaster happens."** – JANA HENDERSON, OFFICE OF MITIGATION DIRECTOR

# OFFICE OF MITIGATION

## FLOODPLAIN MANAGEMENT BUREAU

NFIP communities participating – 337  
Community Rating System Communities – 32  
Average savings per policy in CRS community – \$55.00  
Total CRS Community savings – **\$2,914,816**  
Policies in force – 63,751  
Flood Insurance claims to date in MS – 61,182  
Flood Insurance payout to date – \$3,040,139,629  
Average yearly premium in MS – \$679.06

## THE FLOODPLAIN STAFF PERFORMED THE FOLLOWING:

Community Assistance visits – 67  
Floodplains determinations – 538 letters  
Technical Assistance visits/contacts – 115  
CACs – 40  
Flood Damage Prevention Ordinance reviews – 41  
Substantial Damage Determinations – 197

## PLANNING BUREAU

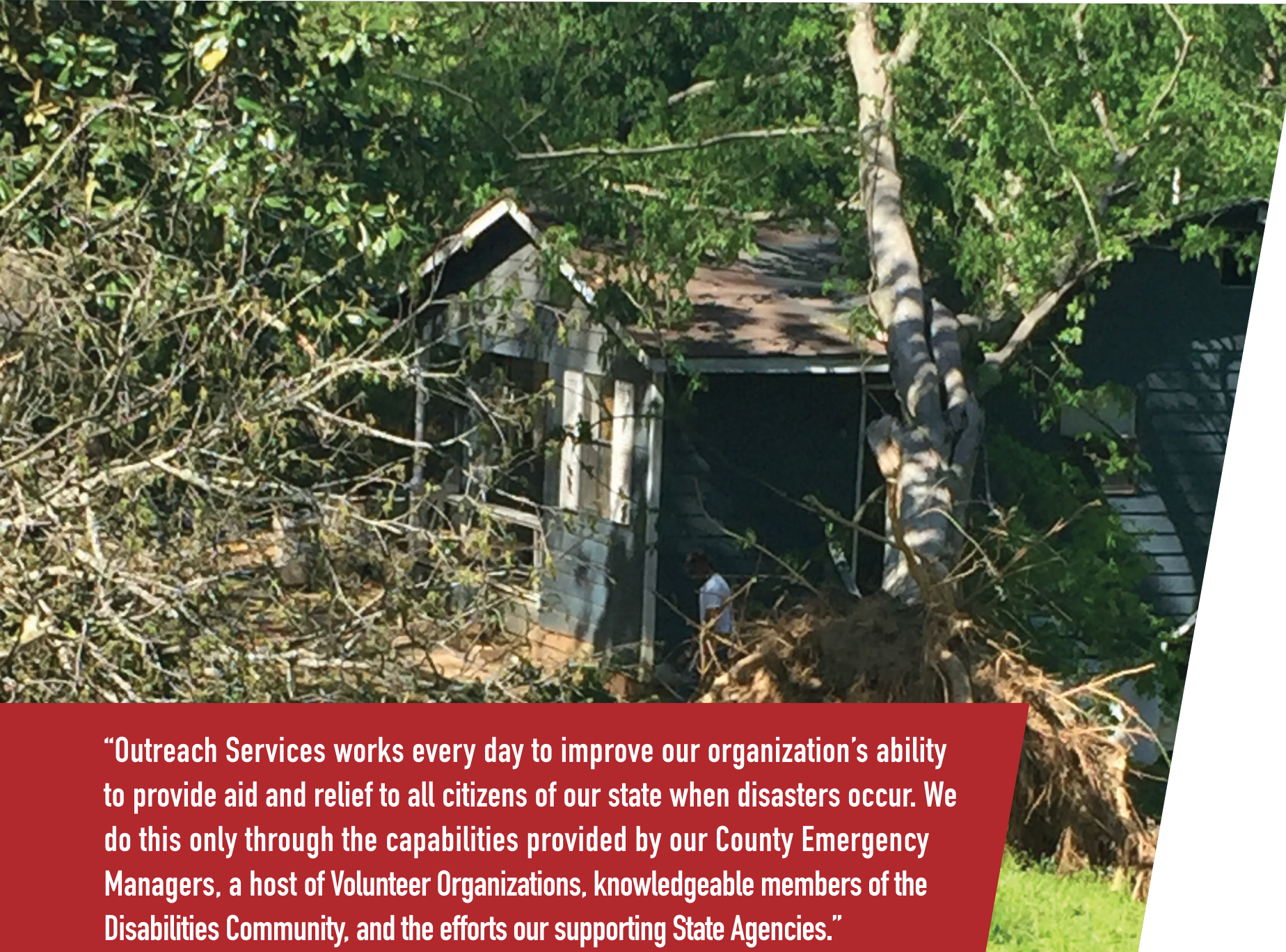
Regional Jurisdictional Plans developed and approved covering 28 jurisdictions – 1  
Multi-jurisdictional plans developed – 0  
Single jurisdictional plans developed and approved – 1  
Disaster University Plans developed and approved – 3  
Regional Plan Under development – 2

## MITIGATION GRANTS BUREAU

Open Disasters – 10  
Closed Disasters – 7  
Federal Funds Obligated – \$346,861,754  
Managing Open projects – 89  
Payments made – \$15,491,784  
Closed projects – Over \$15 million  
Open Disasters (Beginning FY 19) – 10







# OFFICE OF OUTREACH SERVICES

**“Outreach Services works every day to improve our organization’s ability to provide aid and relief to all citizens of our state when disasters occur. We do this only through the capabilities provided by our County Emergency Managers, a host of Volunteer Organizations, knowledgeable members of the Disabilities Community, and the efforts our supporting State Agencies.”**

– JOHN B. VINZANT, OFFICE OF OUTREACH SERVICES DIRECTOR

*The Office of Outreach Services contains the three Bureaus of Individual Assistance, Disability Integration, Disaster Reservists, also including the agency child education program MEMA for Kids (MEMA4Kids.ORG). The Office works to provide access to services, aid, and information for all citizens of Mississippi to assist them with whatever challenges they may face in times of disaster. Part of these efforts is a focus on working with, and harnessing the capabilities in volunteer groups, private sector businesses, and faith based organizations. These entities provide extraordinary care and resources to help Mississippians prepare for, respond to, and recover from disasters. The office works to restore normalcy to the lives of those severely impacted by both natural and man-made disasters.*

## **DISABILITIES INTEGRATION BUREAU**

The DIA Bureau is on the forefront of Disabilities Rights to ensure all aspects of Emergency Management Planning fully incorporate those items which make functional resource availability and accessibility to the Disability Community a reality. The Bureau works tirelessly to educate the Emergency Management community, be they volunteers or professionals, on the correct actions required to ensure compliance with the Americans with Disabilities Act.

## **DISASTER RESERVISTS BUREAU**

The bureau manages the administrative, online training, and instructional training requirements for a group of over 300 plus volunteers on an annual basis. This diverse group of volunteers from across the state form a ready, trained, and deployable core of volunteers which function in roles from Warehouse Management to Radiological Testing to Environmental Engineers. The program seeks out those individuals with unique experience levels in logistics, administration, public information, communications, operations, and other valuable skills sets. Most importantly, the group is comprised of citizens within the State who wish to serve their communities in times of crisis.

## **INDIVIDUAL ASSISTANCE BUREAU**

The Individual Assistance (IA) Bureau promotes the agency by instilling a “whole community” approach to its efforts in guiding communities to deal with catastrophic events. The IA Bureau plays a key role in establishing and executing the recovery housing plan after significant events such as the hurricanes which occur almost annually along the Gulf Coast. Communicating effectively with citizens, counties, and our partners on all levels of government is the key to developing pre and post-disaster plans that saves property and lives.







# EXTERNAL AFFAIRS

*The MEMA External Affairs staff consists of a director and two Staff Officers/Public Information Officers. It is the responsibility of this staff to ensure that during an emergency or disaster, that all state communication and public information assets are used to the best of their ability to help protect lives and property. This includes ensuring that all state agencies, government or nonprofit public information officers understand their role during an emergency and what are the most important functions to fulfill. External Affairs staff have a working knowledge of all agency programs and functions.*

MEMA External Affairs is also responsible for all communication and education efforts to the general public. It is the agency's mission

to ensure that the public is educated on what disaster or emergencies may occur, and to how best protect themselves and their property. This can be done through public awareness campaigns, tours of the State EOC, public speaking engagements and public relations materials that can include public service announcements, news releases, the agency's website, social media and printed handout materials.

It is also the responsibility of MEMA External Affairs to ensure that elected and appointed government officials are fully aware of issues the agency is handling, program goals that were met and how the agency may be of assistance to them.

**“Knowledge is power. With the proper information, at the right time, the public, responders and officials can make informed decisions to save lives.”**

– GREG FLYNN, EXTERNAL AFFAIRS DIRECTOR



### MEMA WEBSITE

109,218 Website Visits  
202,944 Website Pages Reviewed

### FACEBOOK

100,366 (JAN 2018) –  
106,285 Likes (DEC 2019)  
498 Posts  
36,626,349 Impressions

### TWITTER

19,500 Followers  
378 Tweets  
1,658,400 Impressions

### MISSISSIPPI EMA MOBILE APP

8,600 Android Downloads  
24,873 iOS Downloads

### YOUTUBE

27,197 Video Views



## 1ST QUARTER

### PREPAREDNESS/OUTREACH EVENTS

- MEMA Presentation at East Central CC in Newton Co. on 7/10. (20)
- Preparedness Presentation at Pearl Summer Camp on 7/18 (50)
- MEMA Tour for Dept. of Education on 7/20. (12)
- Created Disabilities Preparedness Page for MEMA website 7/20.
- Preparedness Presentation to Richland Men's Group 7/25 (50)
- Disaster Reservist Training Media Event in Tupelo 7/27
- MEMA Tour for Madison Chamber of Commerce 7/27 (20)
- MEMA Tour for Sen. Cochran DC Staff 8/7 (2)
- MEMA Tour for Fire Academy Leadership Class 8/23 (20)
- MEMA Tour for MSANG Leadership Class 8/24 (50)
- MEMA Director Presentation at Jackson State 9/30 (75)
- Hurricane Harvey Recovery media event 9/8
- Preparedness presentation to Rankin Co. Jr. Auxillary 9/11 (80)
- MEMA Tour Starkville HS Robotics Team 9/20 (30)
- MEMA Tour MS Dept. Rehab Services 9/20 (15)
- Preparedness Presentation to Ass'n of Food Service Professionals 9/21 (30)
- MEMA Tour for Hinds CC UAS 9/25 (20)
- MEMA 4 Kids Event in Madison 9/27 (100)

### PUBLIC INFORMATION TRAINING

- MEMA Active Shooter Tabletop Exercise on 8/15

- AAR for Leflore Co. Plane Crash 8/16
- Instruct the Basic Public Information Officer Course (G290) in Lowndes County. 8/22-24. (30)
- Instruct the Basic Public Information Officer Course (G290) in Lauderdale County. 9/19-21 (15)
- EAS TEST – Tested capability of issuing emergency alert system statewide on 8/7.

### MONITOR, PREPARE AND RESPOND TO THREATS AND INCIDENTS.

- Marine Corp KC-130 Plane Crash in Leflore Co. on 7/10.
- Hurricane Harvey threat 8/28-9/1
- Hurricane Irma threat 9/3-9/9

## 2ND QUARTER

### PREPAREDNESS/OUTREACH EVENTS

- Unveiled the new MEMA Mobile App. Press Conference, Facebook "live" and social media push. 10/5.
- Supported Community "Light the Night" event for Leukemia and Lymphoma Society-Pearl 10/12.
- Promoted the first ever FEMA Basic Academy class graduation in MS on 10/13.
- Provided Preparedness PSA college basketball scripts to Ole Miss, Miss St., USM and Alcorn St. 10/17-19.
- Fall Severe Wx Preparedness Week declared by Governor 10/23-10/27.
  - Mon: Alerts and warnings
  - Tues: Severe t-storms
  - Wed: Tornadoes and statewide drill
  - Thurs: Flash flooding
  - Fri: Winter weather
- More than 10 media interviews including Executive Dir. at Memphis ABC on 10/27

- MEMA Tour/meeting for Canadian Consular staffer from Atlanta on 10/24
- Preparedness Presentation to Senior Citizens group at Jackson Library on 10/26.
- MEMA4Kids Preparedness Event at Southern Miss Football vs UAB in Hattiesburg on 10/28-Attendance 41,000
- Preparedness Presentation for Gautier Middle School classes via/SKYPE from the SEOC on 10/30 for 150 students.
- MEMA Tour for Certified Public Managers Executive Class on 11/2 for 20 students.
- Preparedness Presentations to Pearl Upper Elementary Classes for Survival Day on 10/3 for 300 students.
- Promoted and provided materials for the MEMA Preparedness 5K on 10/4 for 100 participants.
- MEMA Tour for Clinton City Officials on 11/7 for 10 members.
- MEMA Tour for Simpson County Law and Public Safety Class on 11/8 for 30 members.
- MEMA Tour for Lawrence County Middle School Classes on 11/9 for 50 students.
- MEMA4Kids Preparedness Event at Mississippi State Football vs. Alabama in Starkville on 11/11, attendance 61,344.
- Congressional Testimony of Executive Director to House Commerce Subcommittee on U.S. Coast Guard response on 11/16.
- MEMA meeting with Rep. Gregg Harper in D.C. on 11/16.
- Supported Executive Director Presentation to MS Association of Floodplain Managers in Philadelphia on 11/30
- Promoted MEMA EMAP Reaccreditation on 12/12 through news release, social media platforms.

- MEMA Tour Hinds CC in Vicksburg on 12/12 for 40 students.
- Coordinating with NWS offices for spring severe weather preparedness week on 12/12.
- MEMA Tour and briefing for MS Legislative Budget office director and staff, 50 members on 12/15.
- MEMA Presentation to Yazoo-Mississippi Delata Levee Board in Clarksdale for 100 members on 12/22.

SHAKEOUT EARTHQUAKE DRILL/CAMPAIGN – Statewide ShakeOut Drill 10/19. Registered Mississippi participants 266,384. Held event at Lewisberg Elementary in Desoto County (500 students) conducted more than 20 media interviews.

MCDEMA MID-WINTER CONFERENCE – Participated in emergency management workshops in Tunica on 11/14-16

PATHWAYS 2 POSSIBILITIES (BILOXI) – Provided preparedness materials to more than 5,000 junior high students on the gulf coast at the Biloxi Coliseum, staffed by MEMA Field Services on 11/14-16.

### PUBLIC INFORMATION TRAINING

- Completed Final Draft of Mississippi EAS Plan for Miss Association of Broadcasters and the FCC on 10/17
- Full State JIC Activation on 10/7.
- Participated on the National Hurricane Conference Public Education committee for the Agenda for 2018 workshops on 11/1.
- Additional edits to the state EAS Plan with the FCC and MAB on 12/7.



## 2ND QUARTER CONTINUED

### MONITOR, PREPARE AND RESPOND TO THREATS AND INCIDENTS.

- Hurricane Nate Preparedness and Response 10/4-10/9
- Working JFO for DR-4350 in Biloxi 12/4-12/8
- Winter Storm 12/7-12/8 News releases, social media posts and media interviews
- Arctic Outbreak Dec 30.

- EOC Tour for Perry County EMA 3/28 (3 staff)

EAST TEST – Conducted statewide EAS test on 1/3 at 10:30 am.

EM DAY AT THE CAPITOL – Cancelled due to Winter Storm.

SPRING SEVERE WEATHER PREPAREDNESS WEEK – Conducted statewide 2/19-23.

CONGRESSIONAL MEETINGS AND NEMA FORUM – Attended in Washington D.C. 3/19-23. (2 staff)

## 3RD QUARTER

### PREPAREDNESS/OUTREACH EVENTS

- Preparedness event at Alcorn vs. JSU basketball in Lorman on 1/6. (5,000)
- Staffed MS Assoc. of Supervisors Conference booth 1/8-10. (500 visitors)
- Hosted NWS Jackson meeting/tour of EOC 2/6. (12 forecasters)
- Presented at Miss. St. Life Skills program 2/13. (100 athletes)
- EOC Tour for Clinton Jr. High on 2/21 (40 students)
- EOC Tour for NW Rankin HS on 3/5 (70 students)
- EOC Tour for MDEQ PIO on 3/6 (2 staff)
- Filmed disability preparedness training class on 3/7. (30 students)
- WLBT wx radio event in Brookhaven on 3/8. (100 residents)
- International Homeland Security Summit 3/12-14 (200 participants)
- Pathways 2 Possibilities Delta 3/21-22. (300 students)
- EOC Tours for MS Rural Water Association 3/26 (150 attendees)

### PUBLIC INFORMATION TRAINING

- Hurricane Nate AAR on 1/10.
- WIPP PIO training on 1/17.
- Winter Storm AAR on 1/25.
- Pipeline Tabletop Exercise on 1/30.
- Patriot South Full Scale Exercise 2/14.
- CUSEC PIO Training in Indianapolis 2/26-28
- GGNS Blue Team Exercise in JIC on 2/28.
- NWS Weather Workshop at Rankin EOC 3/8.
- National Hurricane Conference 3/26-30.

### MONITOR, PREPARE AND RESPOND TO THREATS AND INCIDENTS.

- WIPP Full Scale Exercise-Coordinated 3/21-23
- Winter Storm 1/16-17
- River Flooding 3/9-31.
- Severe Storms 3/28.

## 4TH QUARTER

### PREPAREDNESS/OUTREACH EVENTS

- SEOC Tour for Clinton High School on 4/3 for 30 students
- RISK MAP meeting, Rankin County on 4/10
- RISK MAP Meeting, Hinds County on 4/12
- Tupelo Preparedness Presentation on 4/18 for 50 staff.
- RISK Map Meeting, Madison County on 4/26
- SEOC Tour for MDEQ Leadership class on 5/1 for 20 students.
- Presentation on Dealing with the Press in Natchez on 5/3, 100 attendees.
- SEOC Tour for State Senator Sally Doty on 5/17.
- Hurricane Presentation to Jackson-George Library staff on 5/24, 100.
- WLBT WX Radio event in Vicksburg on 6/20
- News conference for new Director in Pearl on 6/21
- SEOC Tour for Red Cross on 6/26
- Guest on Pearl Municipal Radio Show for preparedness on 6/27
- News conference for new Director in Biloxi on 6/28.
- Guest on Iheart radio for hurricane preparedness on 6/29
- Guest on Iheart radio for hurricane preparedness on 6/29
- GOVERNMENT SOCIAL MEDIA CONVENTION – Attended by Chad Calcote on 4/24-26 in Denver, Co.
- NATIONAL HURRICANE CONFERENCE – Moved to March 26-30, attended by Ray Coleman and Greg Flynn.
- PARTNERS IN PREPAREDNESS SUMMIT – Attended by Greg Flynn and Ray Coleman 5/7-10.

### PUBLIC INFORMATION TRAINING

- Public Relations Association of MS workshop on 4/11-4/13
- Grand Gulf Quarterly meeting in Copiah Co on 4/24
- NWS Jackson Media Training on 4/25
- Spring ECO training/meeting at MEMA on 4/27
- EMPG Advisory Council meeting at MEMA on 5/2.
- AAR for PIP on 5/23
- FEMA-NEMA PIO Workshop at Region IV, ATL 6/12-15
- Taught Basic PIO G290, Panola Co 20 students on 6/12-14
- HURRICANE PREPAREDNESS WEEK – Conducted statewide 5/6-11.

### MONITOR, PREPARE AND RESPOND TO THREATS AND INCIDENTS.

- Severe Storms April 3-4
- Severe Storms April 6-7
- Meridian Tornadoes 4/15-20.
- Sub-Tropical Storm Alberto 5/21-28





# EMERGENCY MANAGEMENT ASSISTANCE COMPACT MISSIONS

Nationally Adopted Interstate Mutual Aid Agreement. EMAC has been ratified by U.S. Congress and is law in all 50 states, the District of Columbia, Puerto Rico, Guam, and the U.S. Virgin Islands. EMAC is the nation's state to state mutual aid system.

*The Emergency Management Assistance Compact (EMAC) is an agreement signed by all 50 states and the U.S. Territories and allows state-to-state support during disasters. For information on EMAC, visit [www.emacweb.org](http://www.emacweb.org)*

## **TEXAS – HURRICANE HARVEY – AUG. 2017 (9 PERSONNEL)**

- Two LUH 72 helicopters with nine National Guard personnel deployed for 10 days for Search and Rescue operations

## **FLORIDA – HURRICANE IRMA – SEPT. 2017 (93 TOTAL PERSONNEL)**

- Six Department of Health personnel deployed for eight days for State Emergency Operations Center leadership/command augmentation support.
- Six Department of Health Logistics Team deployed for nine days to support the North Carolina Mobile Disaster Hospital with resource coordination, technical work, and providing documentation.
- One Department of Health personnel deployed for 15 days to head one of the Mass Care

Feeding, Sheltering, and Reunification Task force workgroups.

- 35 members of the State's Search and Rescue Task Force deployed for 12 days for Urban Search and Rescue operations.

Two CH-47D/F helicopters with 20 National Guard members deployed for four days as part of the Regional Aviation Task Force.

- 26 Department of Wildlife, Fisheries and Parks personnel deployed for 12 days to be paired with Florida Fish and Wildlife Conservation Commission Officers in support of search and rescue missions.
- Type-Three All Hazards Incident Management Team, consisting of five persons, deployed from the Mississippi Gulf Coast for 10 days. The team provided field operations as needed and requested by the Operations Branch of the Florida State Emergency Operations Center.
- 240 cases of Meals, Ready-To-Eat (MRE's) and 1740 cases of Bottled Water sent to Monroe County, Florida.

**13 Total Missions • 320 personnel deployed**



**U.S. VIRGIN ISLANDS – HURRICANE IRMA – SEPT. - OCT. 2017 (202 TOTAL PERSONNEL)**

- 198 National Guardsmen deployed for 32 days to respond to events within the territory, and to provide a wide range of multi-functional capabilities to support Emergency Management.
- Two fuel tanker trucks with four personnel deployed for 32 days to respond to and conduct on-site repairs and recovery operations on National Guard equipment to facilitate Defense Support of Civil Authority operations.

**PUERTO RICO – HURRICANE MARIA – SEPT. - OCT. 2017 (15 PERSONNEL)**

- One Department of Health staff member deployed for 45 days as a Public Health Subject Matter Expert; Member assisted Juan F. Luis Hospital and reported to the United States Virgin Islands Department of Health.

---

**30** Total A-Team Qualified Mississippians (Four newly qualified this past year)

**70** Mission Ready Packages from 15 Agencies/ Teams

Participated in three exercises (one in-state; two multi-state)

**Two** Plans revised/written (Emergency Management Assistance Compact Standard Operating Procedure and the Emergency Management Assistance Compact Reimbursement Procedures)

Local Mutual Aid Support Annex of the State CEMP has been revised

County Level Mutual Aid Support Annex Template has been developed

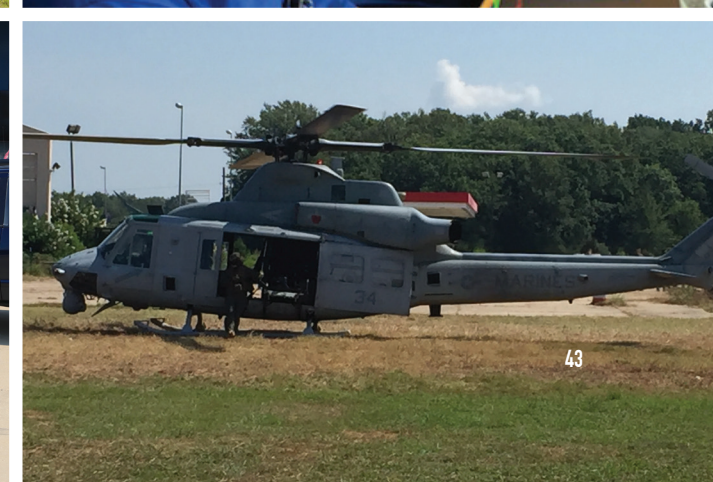
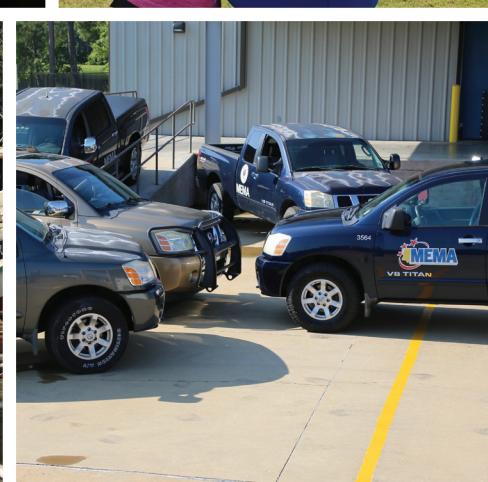
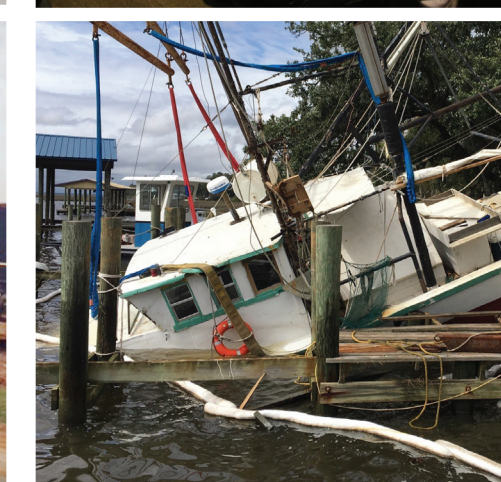
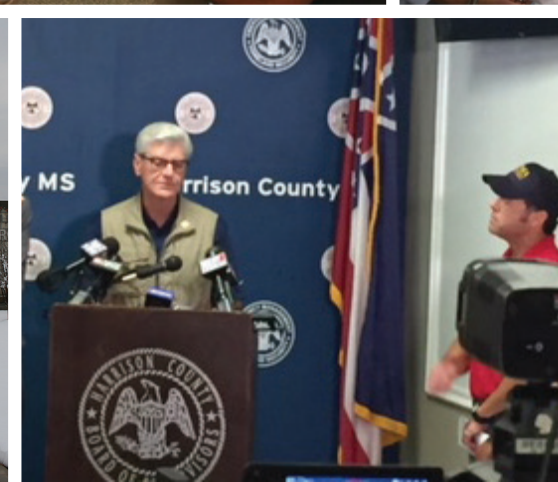
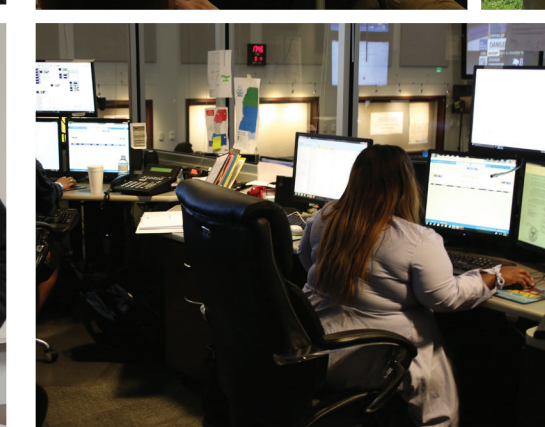
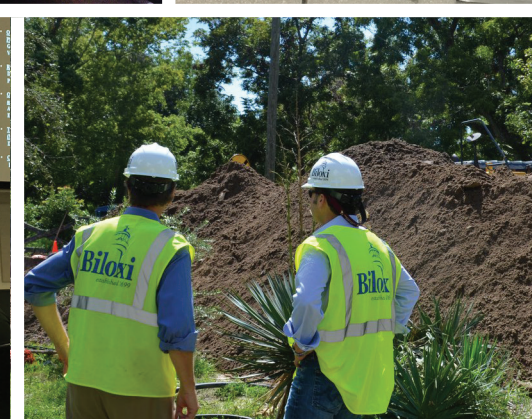
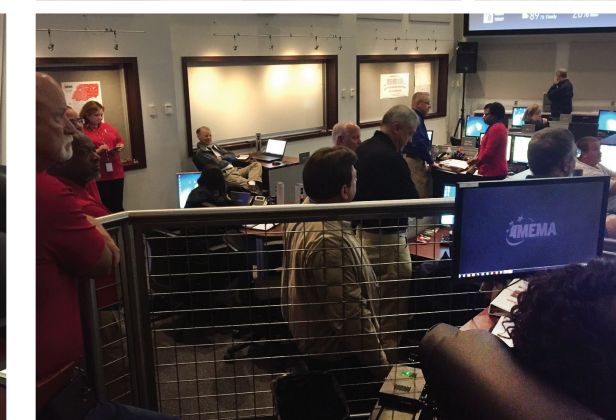
State Mutual Aid Compact Agreement was updated

Mission Assignment Procedures Checklist was developed

**Eight** Mission Assignments for Hurricane Nate and the Leflore County Plane Crash.





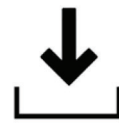




# MISSISSIPPI EMA SMARTPHONE APP

The Mississippi Emergency Management Agency unveiled its preparedness app for smartphones and tablets in October. The new app provides current weather conditions, live radar, an interactive

emergency kit list, real-time social media posts, preparedness sections for all-hazards, news alerts, videos and interactive contact directories for both MEMA and county emergency managers.



**DOWNLOAD  
TODAY**

Search:  
Mississippi EMA

