

2017 ANNUAL REPORT



PREPARING FOR TOMORROW'S DISASTERS TODAY

MISSISSIPPI EMERGENCY MANAGEMENT AGENCY

WWW.FACEBOOK.COM/MSEMAORG

WWW.TWITTER.COM/MSEMA

WWW.YOUTUBE.COM/MSEMAORG1



SMARTPHONE APP: SEARCH MISSISSIPPI EMA

WWW.MSEMA.ORG



TABLE OF CONTENTS



- 02 – TABLE OF CONTENTS
- 03 – OVERVIEW
- 06 – STATE OF EMERGENCIES
- 08 – FEMA DECLARED DISASTER DR-4295 / JANUARY 21, 2017
- 10 – FEMA DECLARED DISASTER DR-4314 / APRIL 30, 2017
- 12 – OFFICE OF PREPAREDNESS
- 14 – OFFICE OF RADIOLOGICAL EMERGENCY PREPAREDNESS
- 18 – OFFICE OF SUPPORT SERVICES
- 22 – OFFICE OF RECOVERY
- 26 – OFFICE OF RESPONSE
- 28 – OFFICE OF MITIGATION
- 32 – OUTREACH SERVICES
- 36 – DIGITAL COMMUNICATIONS
- 38 – EMERGENCY MANAGEMENT ASSISTANCE COMPACT MISSIONS
- 40 – PHOTOS
- 42 – MEMA APP

FY 2017 OVERVIEW

“MEMA is charged with helping keep the public safe against all disasters, both natural and man-made. I’m proud to say that my team was there for the residents and responders during each of the 2017 disasters. From preparing for, responding to and recovering from, the work never stops.”

- LEE SMITHSON, EXECUTIVE DIRECTOR

The Mississippi Emergency Management Agency’s mission is to coordinate activities that will save lives, protect property and reduce suffering of Mississippi’s citizens and their communities impacted by disasters through a comprehensive and integrated program of disaster preparedness, response, recovery and mitigation.

The Agency is led by Executive Director Lee. W. Smithson and comprised of seven core offices: Mitigation, Outreach Services, Preparedness, Radiological Emergency Preparedness, Recovery, Response and Support Services.

In FY17, MEMA coordinated the reimbursement of more than \$200 million to local governments in disaster recovery funds as well as responded to two major disasters that hit the state.

President Donald Trump’s first ever Federal Disaster Declaration came for the tornadoes that struck Forrest, Lamar, Lauderdale and Perry counties on January 20, 2017. Four people were killed and more than 1,000 homes damaged in the storms. Then on April 30, 2017 severe storms caused extensive damage of more than \$14 million to Adams, Calhoun, Carroll, Claiborne, Holmes, Jefferson, Montgomery, Webster, Yazoo counties.



FY 2017 OVERVIEW CONTINUED

SOME OF THE INNOVATIONS FOR MEMA IN FY17 INCLUDE:

- Developed Multi-Agency Coordination Team (Forward Response).
- Developed three Virtual Situation Rooms.
- Developed Digital Common Operating Picture (GIS Based).
- Developing a State-wide Drone Program (two certified pilots).
- Created Office of Outreach Services:
 - Revived Disaster Reservist Program: more than 400 personnel trained.
 - Full-time Disability Integration Advisor.
- Created a Grants Specialist position.
 - Manages existing grants and searches for additional opportunities.
- Created a Chief Technology Officer position in the Office of Response.
- Enhanced Public Information and Warnings:
 - Added a marketing and multimedia specialist position to External Affairs.
 - Implemented a new and improved Mass Notification System.
 - Upgraded the MEMA Preparedness APP for phones and tablets.
- Consolidated the logistics and facilities bureau within the Office of Support Services.
- Conducted the Inaugural Preparedness 5K and donated more than \$10,000 to charities.



PREPAREDNESS 5K - NOV 5, 2017

Director Smithson's commitment is to continue finding efficiencies that provide Mississippi's 2.9 million residents with a positive return on investment for every dollar MEMA receives. That includes cross training all 155 full-time positions as well as leveraging technology wherever, possible to save taxpayer money.

MEMA is always "Preparing for Tomorrow's Disasters Today," and working every day to lead the recovery for all our communities hit with past disasters.

This annual report highlights the work of MEMA's staff that works tirelessly for the people of Mississippi 24-hours a day, 365 days a year.



"MEMA is always 'Preparing for Tomorrow's Disasters Today' and working every day to lead the recovery for all our communities hit with past disasters."

– LEE SMITHSON, EXECUTIVE DIRECTOR

STATE OF EMERGENCIES

JULY 1, 2016 – JUNE 30, 2017

“2017 will go down as the 4th most active year for the number of tornadoes in Mississippi since 1950. In total, 69 tornadoes occurred across the state during the year. Unfortunately, five fatalities occurred along with 59 injuries from these tornadoes. While much of the year was quiet, including the typically active months of November and December, several other months were exceptionally active. During three months of 2017, the second highest monthly tornado count was observed since 1950: January, April, and August.” – NATIONAL WEATHER SERVICE



JANUARY 21, 2017 – SEVERE WEATHER AND TORNADOES

- Damage was reported in at least eight counties after severe storms and tornadoes moved through a portion of the state.
- FEMA Disaster 4295

2017 started early with ten tornadoes on the second day of the year. After a quiet stretch for most of the month, another round of tornadoes occurred on the 21st and 22nd, including the 31-mile, long track of an EF3 tornado that tore through eastern Lamar County, Hattiesburg, Petal and surrounding communities. This tornado, which was the strongest of the year, was half a mile wide and resulted in four deaths and 57 injuries. In total, 13 tornadoes occurred in January, marking it the second most active January since 1950, coming in second all-time to 1999 which had 30 tornadoes.



AUGUST 13, 2016 – FLOODING

- Heavy rainfall and severe flooding in Adams, Amite, Pike, Wilkinson, and other counties.
- National Weather Service in Slidell, LA reported over 20 inches of rain in some parts of South Mississippi.

On August 11-13, portions of Wilkinson, Amite and Pike counties received more than 10 inches of rainfall that caused tremendous flooding. The hardest hit area was the town of Crosby in Wilkinson County where an estimated 15 inches of rain fell, flooding nearly 100 homes. This is the same storm system that brought nearly 30 inches of rain to Baton Rouge, La which flooded more than 30,000 homes.

APRIL 30, 2017 – SEVERE WEATHER, TORNADOES AND FLOODING

- Damage was reported in at least nine counties after severe storms, tornadoes and flooding moved through several portions of the state.
- FEMA Disaster 4314

April, during which 34 tornadoes occurred, was highlighted by the extremely active event on April 30th. This accounted for 29 tornadoes, which is third most for a tornado outbreak in Mississippi. April is notoriously the most active month for tornadoes in the state, particularly during the last week of the month. The most active April for tornadoes was in 2011 when 67 were recorded.



“This tornado disaster was the second in just four years for the Pine Belt. The resiliency of these communities is inspiring.” –STEPHEN McCRAANEY, DEPUTY DIRECTOR



FEMA DECLARED DISASTER

DR-4295

JANUARY 21, 2017 TORNADOES

3:35AM – An EF-3 tornado with winds of 145 miles per hour formed five miles northwest of Purvis, MS and stayed on the ground for 31 miles through Lamar, Forrest and Perry Counties.

- Four deaths reported, all in the city of Hattiesburg.
- Over 50 injuries reported, in relation to the storm.

JANUARY 21, 2017 TORNADOES

10:44PM – An EF-2 tornado with winds of 120 miles per hour formed six miles southwest of Lauderdale, MS and stayed on the ground for seven miles through Lauderdale County.

- One injury reported

DAMAGE AND FEDERAL ASSISTANCE

- Presidential disaster declaration granted on Jan. 24th
 - Counties declared - Forrest, Lamar, Lauderdale and Perry
- More than 500 homes destroyed
- More than 1200 homes damaged
- \$3.309 million dollars awarded in Individual Assistance
- \$2.598 million dollars awarded in Public Assistance





“The amount of debris caused by falling trees in Holmes and Montgomery counties was staggering. God bless the volunteers and charitable organizations who came to help the people.”

– STEPHEN McCRANEY, DEPUTY DIRECTOR



FEMA DECLARED DISASTER

DR-4314

APRIL 30, 2017 TORNADOES

During the morning hours, a squall line crossing the state produced 29 confirmed tornadoes. A majority of the tornadoes tracked from as far south and east as Claiborne County through as far north and west as Carroll, Montgomery and Webster Counties. The strength of the tornadoes ranged from EF-0 to EF-2.

DAMAGE AND FEDERAL ASSISTANCE

- Presidential disaster declaration granted on May 22nd.
 - Counties declared – Adams, Calhoun, Claiborne, Holmes, Jefferson, Montgomery, Webster and Yazoo
- Public Assistance Only
- \$11.495 million dollars awarded in Public Assistance
- More than 110 homes either damaged or destroyed



MEMA's Planning, Training and Exercise Bureaus are assigned to coordinate the agency's preparedness mission, to collect and disseminate incident action plans and situation reports during incidents/events, to develop and maintain plans, to prepare and execute development of exercises and facilitate a wide range of training statewide.



BASIC ACADEMY GRADUATION - 2017

DATE	TOTAL PERSONNEL TRAINED	TOTAL NUMBER OF CLASSES
July 1-September 2016	1159	50
October 1-December 2016	569	25
January thru March 2017	1062	50
April thru June 2017	1229	61

THE BASIC ACADEMY CONSISTS OF THE FOLLOWING COURSES:

- L0101, Foundations of Emergency Management - (80 hours) - 10 days
- L0102, Science of Disaster - (approximately 24 hours) - 3 days
- L0103, Planning: Emergency Operations - (16 hours) - 2 days
- L0104, Exercise Design - (16 hours) - 2 days
- L0105, Public Information and Warning - (16 hours) - 2 days

TOTAL COURSE HOURS: 152 HOURS

OFFICE OF PREPAREDNESS

PLANNING

- Assisted 23 State agencies with writing, revising and updating their agency Continuity of Operations Plans.
- Assisted all 82 counties and the MBCI in completing a five year re-write of their County Comprehensive Emergency Management Plan (CEMP).
- Led the Emergency Management Accreditation Program Baseline Assessment for state re-accreditation.
- Assisted the Mississippi Office of Homeland Security in completing the 2016 THIRA and 2016 State Preparedness Report.
- Planned and coordinated the first Earthquake Advisory Council Meeting which was held in Tunica, MS at the Gold Strike Casino.
- Coordinated statewide participation in the 2016 Shakeout Earthquake Drill by distributing flyers and earthquake preparedness guides to libraries and elementary schools statewide.

TRAINING

The Training Bureau consists of five training officers that instruct an extensive array of training opportunities for state and local

emergency managers, public officials, members of volunteer relief organizations



and professionals in related fields. The MEMA training program is a comprehensive and effective vehicle to train state and local officials in disaster mitigation, preparedness, response and recovery.

The National Emergency Management Basic Academy was held at the Mississippi Emergency Management Agency beginning February 2017, the first ever in the state. There were 45 students who graduated the Basic Academy.

EXERCISES

The Exercise Bureau designed and facilitated 44 exercises with an attendance of 4,962 first responders.

These numbers don't reflect how many exercises the counties put on by themselves. That number is almost 300.



“The Mission of this office is to provide first responders and volunteers with radiological training and support to protect the health and safety of the public and the environment.”

– DAVID HUTTIE, DIRECTOR RADIOLOGICAL EMERGENCY PREPAREDNESS



OFFICE OF RADIOLOGICAL EMERGENCY PREPAREDNESS

The Mission of this office is to provide first responders and volunteers with radiological training and support to protect the health and safety of the public and the environment. This office is uniquely qualified to be an integral partner for the State of Mississippi’s Fixed Site Nuclear Program, Waste Isolation Pilot Program (WIPP) and Preventive Radiological Nuclear Detection Programs (PRND). The Office of Radiological Preparedness accomplishes this by providing leadership, coordinating and conducting meetings, training, drills and evaluated exercises.

TRAINING

This past fiscal year, the Office of REP conducted 42 classes that reached close to 900 students.

The Office of Radiological Preparedness offers and executes a wide variety of training and exercises, with the goal of building and maintain preparedness, prevention, protection, responsiveness, recovery and mitigation of actual or potential radiological or nuclear threats and hazards.

GRAND GULF GRADED EXERCISE

On March 29, 2017, the Radiological Emergency Preparedness staff, both the U.S. Department and Mississippi Office of Homeland Security along with the Federal Emergency Management Agency (Region 4), conducted a Rapidly Escalating Plume Exposure Pathway exercise for the Grand Gulf Nuclear Station in Claiborne County.

The exercise focused on the emergency planning zones in the host and risk counties of Claiborne, Adams, Copiah, Hinds and Warren. The exercise included an added element of a Transuranic Waste Shipment, featuring a terrorist plot. The exercise also demonstrated the new Preventive Radiological Nuclear Detection Program.

The cooperation and teamwork of the participants was key to the success of the exercise, as both state and local organizations demonstrated knowledge of their emergency response plans and procedures.

OFFICE OF REP CONTINUED

WASTE ISOLATION PILOT PROGRAM (WIPP) ROAD SHOW

On March 15, 2017, the Office of REP hosted and coordinated the first informational event in Mississippi, focusing on highway shipments of radioactive materials. The event was offered to the public, elected officials and responders. Shipments of transuranic waste destined for the U.S. Department of Energy's (DOE) Waste Isolation Plant (WIPP) in Carlsbad, New Mexico resumed in April of 2017 along Interstate 20 in Mississippi. Featured products from the event included presentations and discussions with subject matter experts on the WIPP transportation program, as well as specialized containers used for the shipments of transuranic waste.

PREVENTIVE RADIOLOGICAL NUCLEAR DETECTION (PRND)

The REP program fully implemented the state's Preventive Radiological Nuclear Detection Program. REP engaged Federal, State, local and tribal partners within the state to address the risk posed by the threat of radiological and nuclear terrorism.

The PRND program seeks to deter, detect and report the hazardous handling and/or unauthorized attempts to import, possess, store, develop or transport illicit radiological/nuclear material within the state that is out of regulatory control.

EXECUTIVE EDUCATION SEMINAR

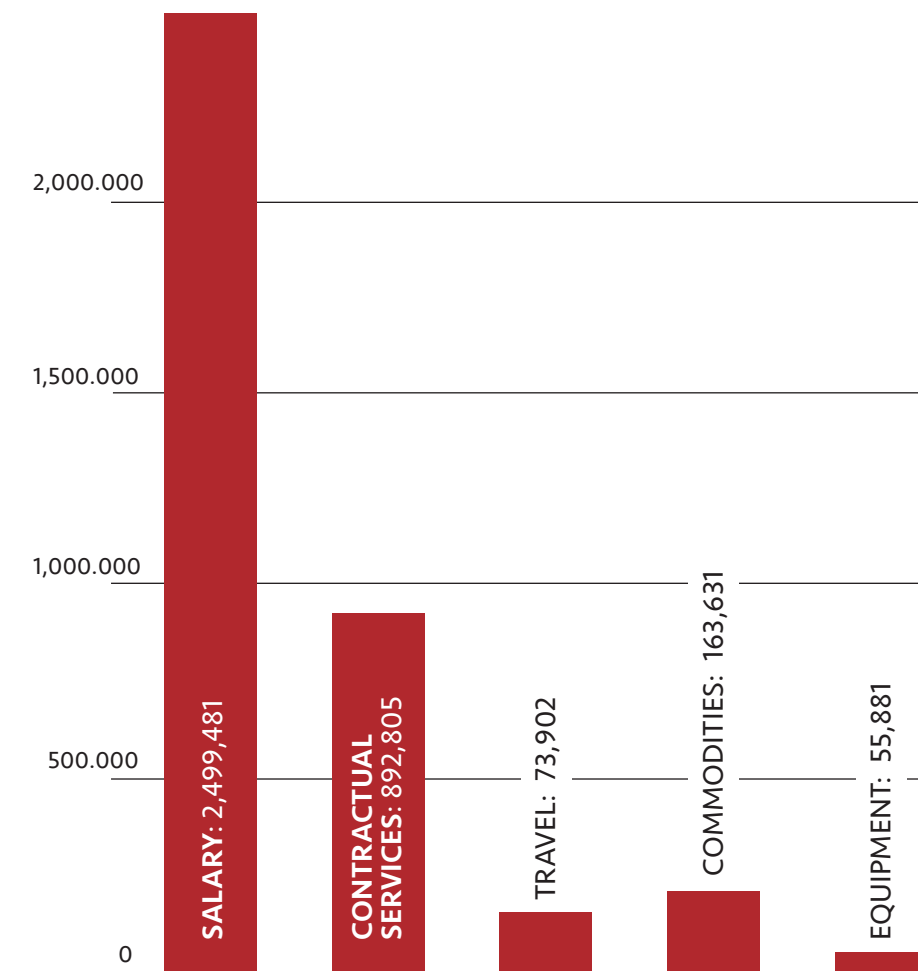
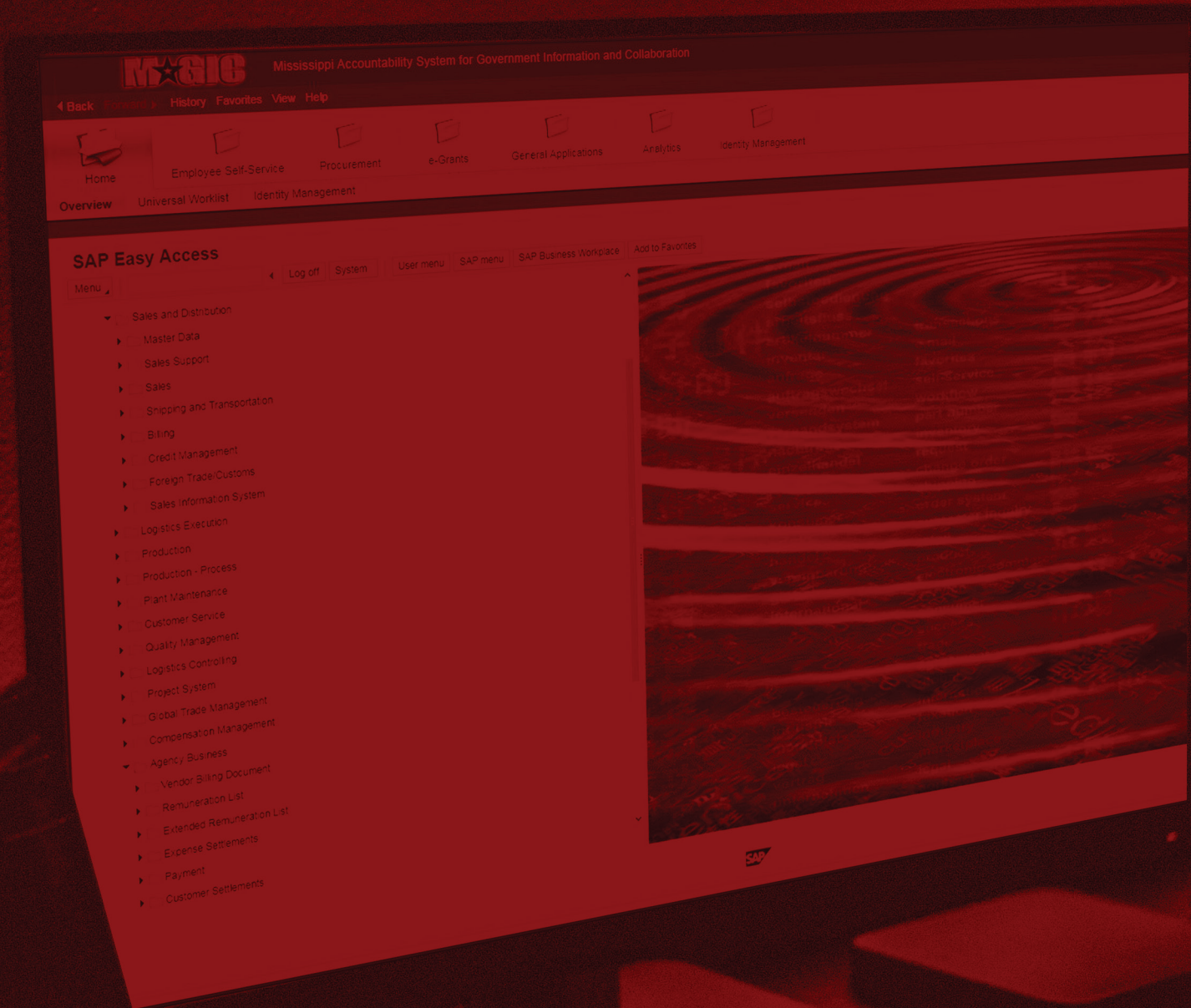
On February 28, 2017, the Office of REP hosted an Executive Education Seminar. With support from the Naval Postgraduate School-Center for Homeland Defense and Security, the REP program helped develop a multimedia scenario based seminar that explored risks and challenges threatening our state. The content was designed specifically for our jurisdiction to help strengthen our capability to plan for, prevent, respond to and recover from catastrophic events and terrorism. Top level safety officials from the State of Mississippi attended the seminar and discussed topics ranging from homeland security policy and strategy at the state and county organization levels.



“To ensure State and Rep County shared success, there are a couple of things I expect from my organization. I expect my employees to remain engaged pro-actively with their customers, maintain excellent customer satisfaction, and always look for new and innovative ways to improve our program and services that emulates the tenants of excellence.” – DAVID HUTTIE, DIRECTOR RADIOLOGICAL EMERGENCY PREPAREDNESS



OFFICE OF SUPPORT SERVICES



MONEY SPENT

721. APPROPRIATED: 3,217,184 - REDUCTION 113,784 = NET 3,103,400

722. APPROPRIATED: 603,650 - REDUCTION 21,350 = NET 582,300

FY 2017 EMERGENCY MANAGEMENT PERFORMANCE GRANT STATE OF MISSISSIPPI COUNTY FUNDING

COUNTY	BASE ALLOCATION	POPULATION	POPULATION ALLOCATION	TOTAL 2017 ALLOCATION
ADAMS	\$8,000.00	31,248	\$20,311.20	\$28,311.20
ALCORN	\$8,000.00	37,304	\$24,247.60	\$32,247.60
AMITE	\$8,000.00	12,458	\$8,097.70	\$16,097.70
BENTON	\$8,000.00	8,264	\$5,371.60	\$13,371.60
BOLIVAR	\$8,000.00	32,737	\$21,279.05	\$29,279.05
CALHOUN	\$8,000.00	14,610	\$9,496.50	\$17,496.50
CARROLL	\$8,000.00	10,255	\$6,665.75	\$14,665.75
CHICKASAW	\$8,000.00	17,246	\$11,209.90	\$19,209.90
CHOCTAW	\$8,000.00	8,242	\$5,357.30	\$13,357.30
CLAIBORNE	\$8,000.00	9,139	\$5,940.35	\$13,940.35
CLARKE	\$8,000.00	15,888	\$10,327.20	\$18,327.20
CLAY	\$8,000.00	19,850	\$12,902.50	\$20,902.50
COAHOMA	\$8,000.00	23,809	\$15,475.85	\$23,475.85
COPIAH	\$8,000.00	28,482	\$18,513.30	\$26,513.30
COVINGTON	\$8,000.00	19,569	\$12,719.85	\$20,719.85
DESOTO	\$8,000.00	175,611	\$114,147.15	\$122,147.15
FORREST	\$8,000.00	75,979	\$49,386.35	\$57,386.35
FRANKLIN	\$8,000.00	7,782	\$5,058.30	\$13,058.30
GEORGE	\$8,000.00	23,695	\$15,401.75	\$23,401.75
GREENE	\$8,000.00	13,408	\$8,715.20	\$16,715.20
GRENADA	\$8,000.00	21,275	\$13,828.75	\$21,828.75
HANCOCK	\$8,000.00	46,791	\$30,414.15	\$38,414.15
HARRISON	\$8,000.00	203,234	\$132,102.10	\$140,102.10
HINDS	\$8,000.00	241,229	\$156,798.85	\$164,798.85
HOLMES	\$8,000.00	17,999	\$11,699.35	\$19,699.35
HUMPHREYS	\$8,000.00	8,513	\$5,533.45	\$13,533.45
ISSAQUENA	\$8,000.00	1,294	\$841.10	\$8,841.10
ITAWAMBA	\$8,000.00	23,529	\$15,293.85	\$23,293.85
JACKSON	\$8,000.00	141,241	\$91,806.65	\$99,806.65
JASPER	\$8,000.00	16,578	\$10,775.70	\$18,775.70
JEFFERSON	\$8,000.00	7,297	\$4,743.05	\$12,743.05
JEFFERSON DAVIS	\$8,000.00	11,385	\$7,400.25	\$15,400.25
JONES	\$8,000.00	67,953	\$44,169.45	\$52,169.45
KEMPER	\$8,000.00	9,896	\$6,432.40	\$14,432.40
LAFAYETTE	\$8,000.00	53,796	\$34,967.40	\$42,967.40
LAMAR	\$8,000.00	60,914	\$39,594.10	\$47,594.10
LAUDERDALE	\$8,000.00	77,755	\$50,540.75	\$58,540.75
LAWRENCE	\$8,000.00	12,749	\$8,286.85	\$16,286.85
LEAKE	\$8,000.00	22,620	\$14,703.00	\$22,703.00
LEE	\$8,000.00	85,381	\$55,497.65	\$63,497.65
LEFLORE	\$8,000.00	29,856	\$19,406.40	\$27,406.40
LINCOLN	\$8,000.00	34,523	\$22,439.95	\$30,439.95

COUNTY	BASE ALLOCATION	POPULATION	POPULATION ALLOCATION	TOTAL 2017 ALLOCATION
LOWNDES	\$8,000.00	59,602	\$38,741.30	\$46,741.30
MADISON	\$8,000.00	105,114	\$68,324.10	\$76,324.10
MARION	\$8,000.00	25,251	\$16,413.15	\$24,413.15
MARSHALL	\$8,000.00	35,801	\$23,270.65	\$31,270.65
MBCI	\$8,000.00	10,590	\$6,883.50	\$14,883.50
MONROE	\$8,000.00	35,873	\$23,317.45	\$31,317.45
MONTGOMERY	\$8,000.00	10,187	\$6,621.55	\$14,621.55
NESHOPA	\$8,000.00	29,403	\$19,111.95	\$27,111.95
NEWTON	\$8,000.00	21,558	\$14,012.70	\$22,012.70
NOXUBEE	\$8,000.00	11,038	\$7,174.70	\$15,174.70
OKTIBBEHA	\$8,000.00	49,833	\$32,391.45	\$40,391.45
PANOLA	\$8,000.00	34,164	\$22,206.60	\$30,206.60
PEARL RIVER	\$8,000.00	55,310	\$35,951.50	\$43,951.50
PERRY	\$8,000.00	12,245	\$7,959.25	\$15,959.25
PIKE	\$8,000.00	39,667	\$25,783.55	\$33,783.55
PONTOTOC	\$8,000.00	31,550	\$20,507.50	\$28,507.50
PRETISS	\$8,000.00	25,256	\$16,416.40	\$24,416.40
QUITMAN	\$8,000.00	7,349	\$4,776.85	\$12,776.85
RANKIN	\$8,000.00	150,228	\$97,648.20	\$105,648.20
SCOTT	\$8,000.00	28,207	\$18,334.55	\$26,334.55
SHARKEY	\$8,000.00	4,552	\$2,958.80	\$10,958.80
SIMPSON	\$8,000.00	26,912	\$17,492.80	\$25,492.80
SMITH	\$8,000.00	15,909	\$10,340.85	\$18,340.85
STONE	\$8,000.00	18,012	\$11,707.80	\$19,707.80
SUNFLOWER	\$8,000.00	26,407	\$17,164.55	\$25,164.55
TALLAHATCHIE	\$8,000.00	14,394	\$9,356.10	\$17,356.10
TATE	\$8,000.00	28,201	\$18,330.65	\$26,330.65
TIPPAH	\$8,000.00	22,190	\$14,423.50	\$22,423.50
TISHOMINGO	\$8,000.00	19,491	\$12,669.15	\$20,669.15
TUNICA	\$8,000.00	10,234	\$6,652.10	\$14,652.10
UNION	\$8,000.00	28,311	\$18,402.15	\$26,402.15
WALTHALL	\$8,000.00	14,599	\$9,489.35	\$17,489.35
WARREN	\$8,000.00	47,140	\$30,641.00	\$38,641.00
WASHINGTON	\$8,000.00	47,231	\$30,700.15	\$38,700.15
WAYNE	\$8,000.00	20,480	\$13,312.00	\$21,312.00
WEBSTER	\$8,000.00	9,767	\$6,348.55	\$14,348.55
WILKINSON	\$8,000.00	9,047	\$5,880.55	\$13,880.55
WINSTON	\$8,000.00	18,160	\$11,804.00	\$19,804.00
YALOBUSHA	\$8,000.00	12,471	\$8,106.15	\$16,106.15
YAZOO	\$8,000.00	27,264	\$17,721.60	\$25,721.60
				\$ 2,593,248.30
			COUNTY TOTAL PLUS MATCH	\$ 5,186,496.60
			MEMA TOTAL PLUS MATCH	\$3,472,275.96
			M&A PLUS MATCH	\$430,989.44
			GRAND TOTAL	\$9,089,762.00

OFFICE OF RECOVERY

FY 2017 PUBLIC ASSISTANCE MONEY DISBURSED

DISASTER 1604 - Hurricane Katrina = **\$72,922,661**

DISASTER 1794 - Hurricane Gustav = **\$129,820**

DISASTER 1906 - Severe Storms, Tornadoes & Flooding (Apr. 2010) = **\$17,260**

DISASTER 1972 - Severe Storms & Tornadoes (Apr. 2011) = **\$267,214**

DISASTER 1983 - Flooding (May-June 2011) = **\$80,525**

DISASTER 4081 - Hurricane Issac (Aug. - Sept. 2012) = **\$2,364,133**

DISASTER 4101 - Severe Storms, Tornadoes & Floods (Feb. 2013) = **\$320,146**

DISASTER 4175 - Severe Storms, Tornadoes & Floods (April 2014) = **\$9,385,081**

DISASTER 4205 - Severe Storms & Tornadoes (Dec. 2014) = **\$273,446**

DISASTER 4248 - Severe Storms, Tornadoes & Straight-Line Winds (Dec. 2015) = **\$4,605,505**

DISASTER 4268 - Severe Storms & Flooding (Mar. 2016) = **\$4,204,613**

DISASTER 4295 - Pine Belt Tornado & Straight-Line Winds (Jan. 2017) = **\$2,598,425**

TOTAL - \$97,168,829

"The members of the Recovery Office remain committed to providing Public Assistance reimbursements to the local governments and certain private non-profits throughout Mississippi impacted by major federally declared disasters." - CLAYTON FRENCH, RECOVERY OFFICE DIRECTOR



- MARITIME INCIDENT
- WARMING SHELTER
- URBAN SMALL STREAMS
- **TRAFFIC REPORTS** –
- SEARCH AND RESCUE
- WRECK/NON HAZMAT
- AIRCRAFT INCIDENT
- RAD SHIPMENT
- **THUNDERSTORM WARNING** –
- SILVER ALERT
- ANIMAL HEALTH
- FISH KILL
- WHITE POWDER
- FLASH FLOOD WATCH
- **BOIL WATER NOTICES** –
- MISSING PERSON
- WINTER STORM WATCH
- STORM DAMAGE
- **TORNADO WARNING** –
- SECURITY
- TRAIN INCIDENT
- BURN BANS
- FIRE INCIDENT
- **HAZARDOUS MATERIALS** –
- TORNADO WATCH
- POWER OUTAGE
- BURN BANS
- EXPLOSION
- DAMAGE REPORTS
- **FLASH FLOOD WARNING** –
- WELL INCIDENT
- OFFICE/SCHOOL CLOSING
- DENSE FOG ADVISORIES
- EMAC MISSIONS
- ACTIVE SHOOTER
- FLOODING REPORT
- **DRILL/EXERCISES** –
- SUSPICIOUS LETTERS
- HOSTAGE INCIDENT



WEATHER INCIDENTS: 963
 HAZARDOUS MATERIALS: 505
 TRANSPORTATION INCIDENTS: 231
 MAN-MADE: 707
TOTAL: 2,406

OFFICE OF RESPONSE

The Office of Response is responsible for coordinating support for state and local response. The Office executes this responsibility through its Operation's Bureau. During an incident, this Bureau maintains the of the State Emergency Operations Center (SEOC), with assistance from the Emergency Support Functions, if needed.

The Field Services Bureau consists of six deployed area coordinators and two field service specialists. They cover all 82 counties and the Mississippi Band of Choctaw Indians (counties broken down into 6 regions), to provide assistance and advise local emergency managers.

Through the Communications Bureau, the State's warning point is fully operational, 24 hours a day, seven days a week.

Finally, the Geographical Information Systems Bureau (GIS) provides detailed mapping for local, state and federal entities for planning, response and recovery operations.

- Total Incidents Reported to the SEOC – 2,406 calls
- Average of 24 incidents reported, per county.



OFFICE OF MITIGATION



TORNADO SAFE ROOM

50 mph safe room design wind speed (3-second gust)
 Blast Impact Resistance:
 5 lbs. 2X4@ 100 mph (horizontal)
 5 lbs. 2X4@ 67 mph (vertical)
 Safe room manufacturer/builder Burks - Mordecai Builders

“Mitigation is truly the cornerstone of emergency management. Everything begins and ends with the Office of Mitigation. Building smarter and stronger has decreased disaster damage to property and helped protect the people of Mississippi.” – JANA HENDERSON, MITIGATION OFFICE DIRECTOR.

FLOODPLAIN MANAGEMENT BUREAU

NFIP communities participating – 330
 Community Rating System Communities – 323
 Average savings per policy in CRS community – \$54.00
 Total CRS Community savings – \$2,730,564
 Policies in force – 64,477
 Insurance in force in MS – \$15.5 billion
 Flood Insurance claims to date in MS – 60,645
 Flood Insurance payout to date – \$3 billion
 Average yearly premium in MS – \$661.04

PLANNING BUREAU

Regional Jurisdictional Plans developed and approved covering 166 jurisdictions – 4
 Multi-jurisdictional plans developed and approved covering 8 jurisdictions – 4
 Single jurisdictional plans developed and approved – 6
 Disaster University Plans developed and approved – 2
 Regional Plan Under development – 1



THE FLOODPLAIN STAFF PERFORMED THE FOLLOWING:

Community Assistance visits – 28
 Floodplains reviews – 250
 Technical Assistance visits/contacts – 259
 Flood Damage Prevention Ordinance reviews – 37
 Substantial Damage Assessments – 350

MITIGATION GRANTS BUREAU

Open Disasters – 16
 Closed Disasters – 5
 Federal Funds Obligated – \$339,225,278
 Managing Open projects – more than 100
 Payments made – more than \$15,352,704
 Closed projects – more than \$15 million
 Open Disasters (Beginning FY 18) – 11

OFFICE OF MITIGATION CONTINUED

Mitigation Kids' Campaign – Jake, the Mitigation Wizard, leads Delta the Disaster Dog and Pearl the Preparedness Pup along with the other disaster “expert” friends discussing how to prepare and mitigate against all disasters.

MEMA4KIDS.ORG



OFFICE OF OUTREACH SERVICES

The Office of Outreach Services is comprised of the Individual Assistance, Disability Integration and Disaster Reservist Bureaus. It also incorporates all efforts to work with volunteer, private, and faith-based organizations as Mississippians prepare for, respond to, and recover from disasters.

INDIVIDUAL ASSISTANCE BUREAU

The Individual Assistance (IA) Bureau works promoting the agency in “whole community” efforts as it works in both pre/post-disaster with partners on all levels of government, as well as non-government entities, such as volunteer organizations.

The IA Staff helps identify those individuals that have unmet needs and coordinates that assistance through the proper channels of government or levels of volunteer efforts.

Summary of IA activities from July 1, 2016 – June 30, 2017

Wilkinson County (September – December 2016): Actively involved in formation of the Community Based Recovery Committee (CBRC) to assist in the recovery efforts from the August Flooding Event. IA coordinated the Disaster Assistance Housing Program (DAHP) to help with 63 applicants with unmet needs and assisted with the Small Business Association (SBA) Disaster Loan Process.

Forrest County (January – March 2017):

Assisted with the setup and operation of five Disaster Recovery Centers (DRCs) in Lamar, Perry, Lauderdale and Forrest Counties due to the tornadoes that ravaged the area. The IA staff was a key coordinator of the Community Based Recovery Committee meetings and the FEMA Disaster Survivor Assistance Teams. IA organized the Housing Task Force for 80 families with Unmet Needs.

Holmes County (April 2017 – continuing to provide assistance):

IA assisted FEMA, SBA (Small Business Administration) and county officials conducting Preliminary Damage Assessments due to the severe weather outbreak in the Holmes County area. IA coordinated with Holmes County Long Term Recovery Committee (LTRC) for unmet needs and attended the biweekly meetings to assist in the recovery efforts, as well as organized grant agreements with the county and the LTRC.

Montgomery County (April 2017 - continuing to provide assistance):

IA assisted FEMA, SBA and county officials conducting Preliminary Damage Assessments due to the severe weather outbreak in the Montgomery County area. IA attended the biweekly meetings to assist in the recovery efforts with the Emergency Management Director and LTRC.

“Our goal in creating the Office of Outreach Services is simple...to provide all Mississippians access to services and information, no matter what challenges they may face.” – LEE SMITHSON, EXECUTIVE DIRECTOR



OFFICE OF OUTREACH SERVICES CONTINUED

Three Presidential Declared Disasters began or were ongoing between July 1, 2016 and June 30, 2017 in which the Individual Assistance Bureau was involved: DR-4248 (Declared January 4, 2016), DR-4268 (Declared March 25, 2016) and DR-4295 (Declared January 25, 2017).

TOTAL FEDERAL ASSISTANCE WAS:

FEMA: \$300,952.62

SBA:

- DR-4248 - 70 Home Loans totaling \$4,422,000
- DR-4268 - 190 Home Loans totaling \$6,491,900
- DR-4295 - 110 Home Loans totaling \$5,270,300

HOUSING: \$243,726.03

NON-DECLARED DISASTERS INVOLVING IA BUREAU:

DR-4314 (Declared May 22, 2017)
Wilkinson County Flooding Event
 (August 12, 2016).

SBA:

- DR-4314 - 15 Home Loans totaling \$623,500
- Wilkinson County Flooding - 3 Home Loans totaling \$140,300

HOUSING: \$50,000.00

DISABILITIES INTEGRATION BUREAU

This Bureau continues to be on the forefront of Disabilities Rights to ensure everyone has complete and full access to preparedness, response, and recovery information during times of crisis.

The Disability Integration Advisor, with assistance from the Individual Assistance Team has conducted accessibility surveys on 161 Disaster Recovery Centers (DRC's) in 71 counties. Reports have been distributed to the County Emergency Management Offices which includes improvement requirements and suggestions which will allow the EMA to be in full compliance with the 2010, Standards for Accessible Design.

DISASTER RESERVIST BUREAU

This Bureau has managed the administrative requirements, online training, three task-focused training sessions for over 550 Disaster Reservists.

The program seeks those with various experience levels in logistics, administration, public information, communications, operations, public assistance and other needed skill sets.

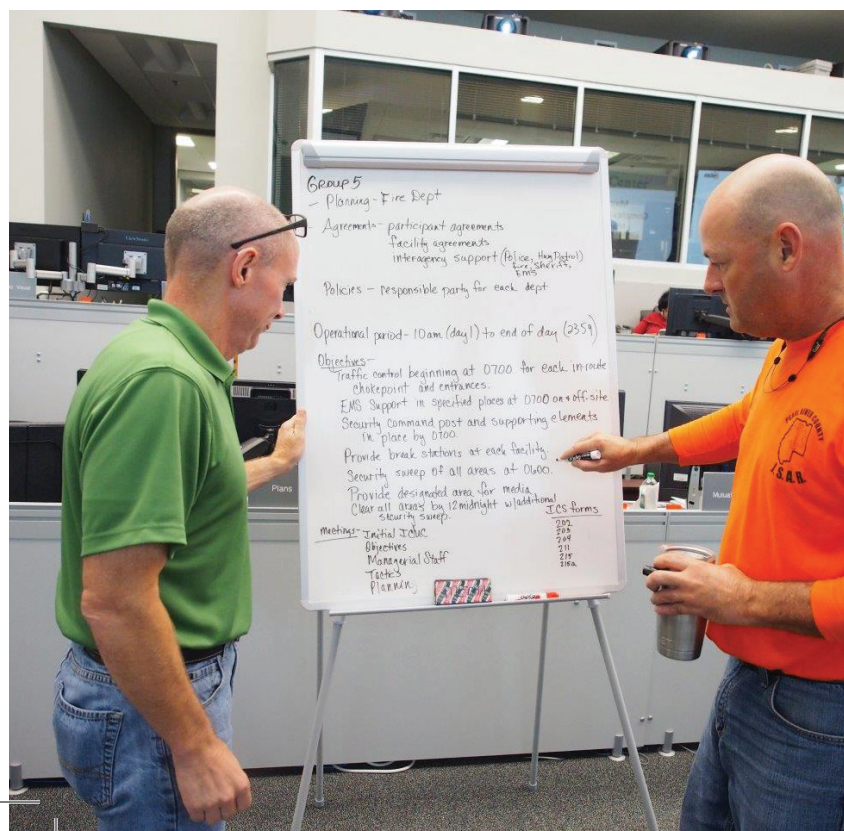
Disaster Reservists have received 22 orientation sessions and three quarterly training sessions with close to 1600 work hours of training. The quarterly training included:

- Damage Assessment and familiarization with the online Damage Assessment Collector App

- An overview of Disaster Recovery Center operations and Disability Integration

- Volunteer Reception Center operations.

Disaster Reservists have assisted state and county offices in over 50 missions that were assigned during the January 2017 Tornado Outbreak, April 2017 Severe Weather, and Tropical Storm Cindy. Job assignments included: telephone operations, damage assessments, disaster recovery centers, volunteer reception centers, Red Cross shelters, and logistics.



DIGITAL COMMUNICATIONS

“MEMA is always searching for new and innovative ways to reach the public when it comes to preparedness and emergency information. Every communication avenue must be considered in order to reach every resident of our state.” – GREG FLYNN, EXTERNAL AFFAIRS DIRECTOR



MEMA's External Affairs focuses on educating Mississippians on preparedness during non-disaster times, while providing emergency public information to the residents and media during times of crisis and disaster through multiple communication platforms.

In addition to traditional media messaging (print, radio and television), there has been an increased usage of digital communication tools to ensure the Agency is reaching target audiences via both desktop and mobile devices. These digital tools are essential during crisis time because many Mississippians look to these platforms for life-saving information.



MEMA WEBSITE

120,277 Website Visits
237,821 Website Pages Reviewed

FACEBOOK

85,605 (JAN 2017) –
100,366 Likes (JAN 2018)
538 Posts
34,572,128 Impressions

TWITTER

18,900 Followers
592 Tweets
2,190,700 Impressions

MISSISSIPPI EMA MOBILE APP

7,677 Android Downloads
16,553 iOS Downloads

YOUTUBE

23,862 Video Views



“The Emergency Management Assistance Compact is a long way of saying, when other states need help before, during, and after a disaster, we go and help. I’m proud to know that our state is always willing to assist those during the worst of times.” – LEE SMITHSON, EXECUTIVE DIRECTOR



EMERGENCY MANAGEMENT ASSISTANCE COMPACT MISSIONS EMAC

The Emergency Management Assistance Compact (EMAC) is an agreement signed by all 50 states and the U.S. Territories and allows state-to-state support during disasters. For information on EMAC, visit www.emacweb.org

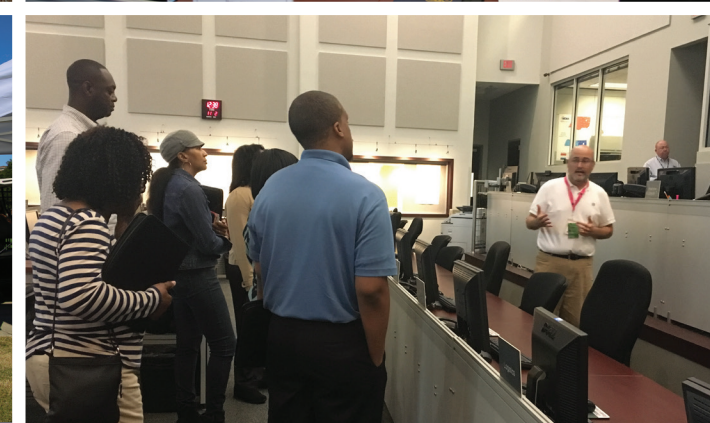
LOUISIANA – HISTORIC FLOODING, AUGUST 2016

- Two Swift Water Rescue Teams and two Chinook Helicopters from the Mississippi National Guard (including personnel), supported our neighbors to the West during their historic flooding event that dumped over 20 inches over rain in close to 21 parishes.

FLORIDA AND NORTH CAROLINA – HURRICANE MATTHEW, OCTOBER 2016

- North Carolina - MEMA sent two staff members to North Carolina to support preparations for potential impacts of Hurricane Matthew. Those members were a part of the EMAC “A-Team”, which helped coordinate response and recovery resources in the state of North Carolina from other states. The A-Team worked out of the State Emergency Operations Center in Raleigh.
- Florida – The Mississippi National Guard sent two Black Hawk helicopters and one Chinook Helicopter to Florida, along with aircrew, to support response operations during Hurricane Matthew.





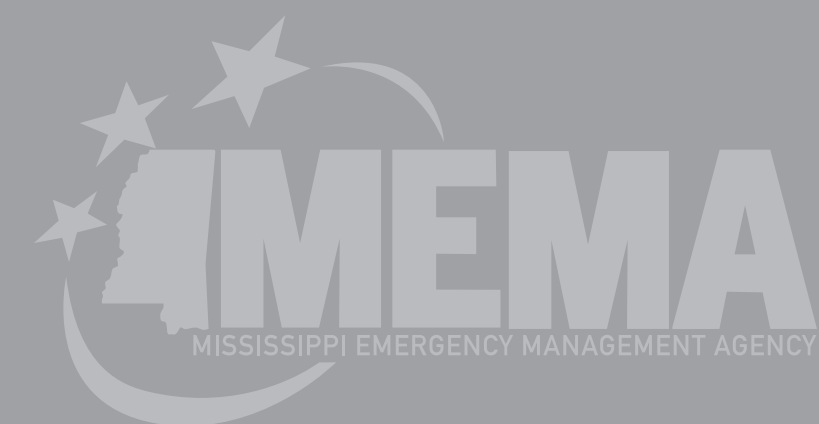
MISSISSIPPI EMA SMARTPHONE APP

The Mississippi Emergency Management Agency unveiled its new preparedness app for smartphones and tablets in October. The new app provides current weather conditions, live radar, an interactive

emergency kit list, real-time social media posts, preparedness sections for all-hazards, news alerts, videos and interactive contact directories for both MEMA and county emergency managers.

“This is truly a one-stop shop for everyone to use every day. Our goal in development was to give people a reason to open this app every morning, not just when a disaster is on the horizon. We believe this could be a game changer when it comes to preparing Mississippians or those visiting our great state.” – LEE SMITHSON, EXECUTIVE DIRECTOR

WEATHER
MAP
EMERGENCY
SOCIAL MEDIA
PREPAREDNESS
NEWS AND ALERTS
VIDEOS



↓
**DOWNLOAD
TODAY**
Search:
Mississippi EMA

